

ARALAR antibody

Cat. No. GTX34202

宿主	Rabbit
克隆	Polyclonal
同种型	IgG
实验应用	WB, IHC-P
种属反应	Human

实验应用

应用说明

*最佳稀释倍数与浓度应由研究人员确认

Suggested dilution	Recommended dilution
WB	1:500-1:2000
IHC-P	1:100-1:300

以下为常规应用缩写的中文注解

WB: 免疫印迹

ICC/IF: 细胞染色

IHC-P: 石蜡切片

IHC-Fr: 冰冻切片

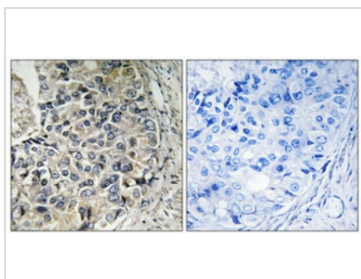
属性

形式	Liquid
存储溶液	PBS, 0.5% BSA, 50% Glycerol
保存剂	0.02% Sodium azide
存放说明	Store as concentrated solution. Centrifuge briefly prior to opening vial. For short-term storage (1-2 weeks), store at 4°C. For long-term storage, aliquot and store at -20°C or below. Avoid multiple freeze-thaw cycles.
浓度	1 mg/ml (Please refer to the vial label for the specific concentration.)
偶联	Unconjugated
注意事项	仅供实验室使用。不适用于人类或动物的任何临床、治疗或诊断用途。不适合动物或人类食用。

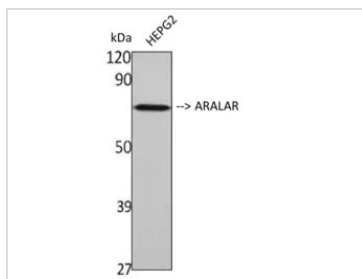


For full product information, images and publications, please visit our [website](#).

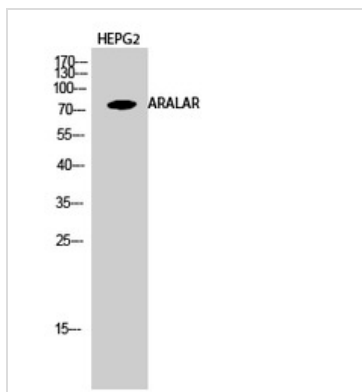
產品圖片

**GTX34202 IHC-P Image**

IHC-P analysis of human prostate carcinoma tissue using GTX34202 ARALAR antibody. The picture on the right is blocked with the synthesized peptide.

**GTX34202 WB Image**

WB analysis of HepG2 cell lysate using GTX34202 ARALAR antibody.

**GTX34202 IHC-P Image**

IHC-P analysis of human prostate cancer tissue using GTX34202 ARALAR antibody. Negative control (the lower left corner) was secondary antibody only.

Antigen retrieval : Tris-EDTA, pH8.0 under high-pressure and temperature

Dilution : 1:100



For full product information, images and publications, please visit our [website](#).