

CD3 epsilon antibody [PC3/188A]

Cat. No. GTX34480

宿主	Mouse
克隆	Monoclonal
同种型	IgG1
实验应用	WB, ICC/IF, IHC-P, FCM
种属反应	Human, Rat, Rabbit, Bovine, Chicken, Guinea pig, Pig, Horse

实验应用

应用说明

*最佳稀释倍数与浓度应由研究人员确认

Suggested dilution	Recommended dilution
WB	1-2µg/ml for 60 minutes at RT
ICC/IF	1-2µg/ml
IHC-P	Assay dependent
FCM	1-2µg/10 ⁶ cells

以下为常规应用缩写的中文注解

WB: 免疫印迹

ICC/IF: 细胞染色

IHC-P: 石蜡切片

IHC-Fr: 冰冻切片

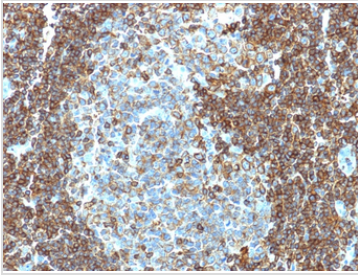
属性

形式	Liquid
存储溶液	PBS, 0.05% BSA
保存剂	0.05% Sodium azide
存放说明	Store as concentrated solution. Centrifuge briefly prior to opening vial. For short-term storage (1-2 weeks), store at 4°C. For long-term storage, aliquot and store at -20°C or below. Avoid multiple freeze-thaw cycles.
浓度	0.2 mg/ml (Please refer to the vial label for the specific concentration.)
偶联	Unconjugated
注意事项	仅供实验室使用。不适用于人类或动物的任何临床、治疗或诊断用途。不适合动物或人类食用。

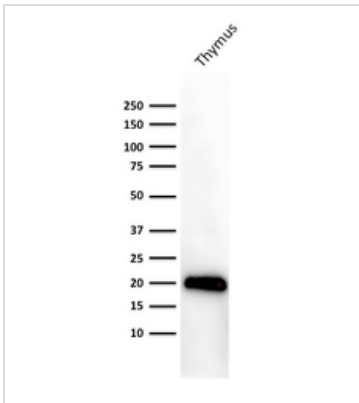


For full product information, images and publications, please visit our [website](#).

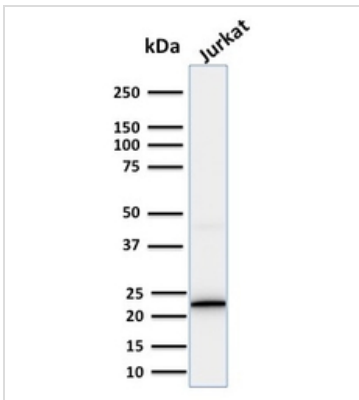
產品圖片

**GTX34480 IHC-P Image**

IHC-P analysis of human tonsil tissue using GTX34480 CD3 epsilon antibody [PC3/188A].

**GTX34480 WB Image**

WB analysis of human thymus tissue lysate using GTX34480 CD3 epsilon antibody [PC3/188A].

**GTX34480 WB Image**

WB analysis of Jurkat cell lysate using GTX34480 CD3 epsilon antibody [PC3/188A].



For full product information, images and publications, please visit our [website](#).