

## Factor XIIIa antibody [F13A1/1448]

Cat. No. GTX34714

宿主	Mouse
克隆	Monoclonal
同种型	IgG2b
实验应用	WB, ICC/IF, IHC-P, FCM, ELISA, Protein Array
种属反应	Human

## 实验应用

## 应用说明

\*最佳稀释倍数与浓度应由研究人员确认

Suggested dilution	Recommended dilution
WB	1-2 $\mu$ g/ml
ICC/IF	1-2 $\mu$ g/ml
IHC-P	1-2 $\mu$ g/ml for 30 min at RT
FCM	1-2 $\mu$ g/10 <sup>6</sup> cells
ELISA	2-4 $\mu$ g/ml (for coating)
Protein Array	Assay dependent

**Note : Staining of formalin-fixed tissues requires heating tissue sections in 10mM Tris with 1mM EDTA, pH 9.0, for 45 min at 95°C followed by cooling at RT for 20 minutes.**

**For ELISA coating, recommend using BSA-free format (please contact us for PBS only format).**

以下为常规应用缩写的中文注解

WB: 免疫印迹

ICC/IF: 细胞染色

IHC-P: 石蜡切片

IHC-Fr: 冰冻切片

## 属性

形式	Liquid
存储溶液	PBS, 0.05% BSA
保存剂	0.05% Sodium azide
存放说明	Store as concentrated solution. Centrifuge briefly prior to opening vial. For short-term storage (1-2 weeks), store at 4°C. For long-term storage, aliquot and store at -20°C or below. Avoid multiple freeze-thaw cycles.
浓度	0.2 mg/ml (Please refer to the vial label for the specific concentration.)
偶联	Unconjugated

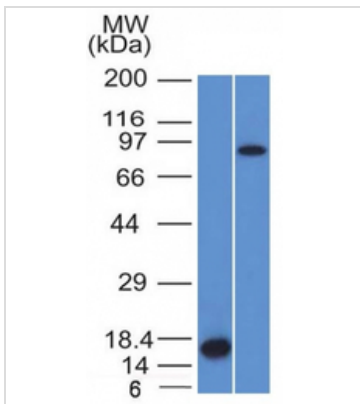


For full product information, images and publications, please visit our [website](#).

注意事项

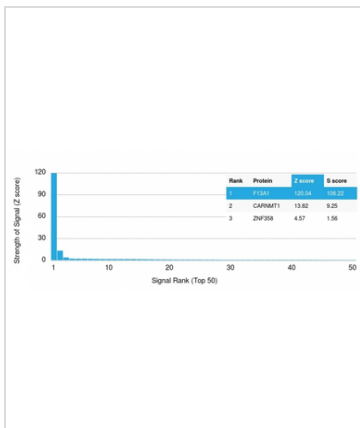
仅供实验室使用。不适用于人类或动物的任何临床，治疗或诊断用途。不适合动物或人类食用。

產品图片



**GTX34714 WB Image**

WB analysis of recombinant Factor XIIIa protein and HeLa cell lysates using GTX34714 Factor XIIIa antibody [F13A1/1448].



**GTX34714 Protein Array Image**

Analysis of Protein Array containing more than 19,000 full-length human proteins using Factor XIIIa Mouse Monoclonal Antibody (F13A1/1448). Z- and S- Score: The Z-score represents the strength of a signal that a monoclonal antibody produces when binding to a particular protein on the HuProt™ array. Z-scores are described in units of standard deviations (SD's) above the mean value of all signals generated on that array. If targets on HuProt™ are arranged in descending order of the Z-score, the S-score is the difference (also in units of SD's) between the Z-score. S-score therefore represents the relative target specificity of a Monoclonal Antibody to its intended target. A Monoclonal Antibody is considered to specific to its intended target if the Monoclonal Antibody has an S-score of at least 2.5. For example, if a Monoclonal Antibody binds to protein X with a Z-score of 43 and to protein Y with a Z-score of 14, then the S-score for the binding of that Monoclonal Antibody to protein X is equal to 29.



For full product information, images and publications, please visit our [website](#).