

MAML3 antibody [MAML3/1303]

Cat. No. GTX34815

宿主	Mouse
克隆	Monoclonal
同种型	IgG1
实验应用	IHC-P
种属反应	Human

实验应用

应用说明

*最佳稀释倍数与浓度应由研究人员确认

Suggested dilution	Recommended dilution
IHC-P	1-2 μ g/ml for 30 minutes at RT

Note : Staining of formalin-fixed tissues is enhanced by heating tissue sections in 10mM Tris buffer with 1mM EDTA, pH 9.0, for 45 min at 95°C followed by cooling at RT for 20 minutes.

以下为常规应用缩写的中文注解

WB: 免疫印迹

ICC/IF: 细胞染色

IHC-P: 石蜡切片

IHC-Fr: 冰冻切片

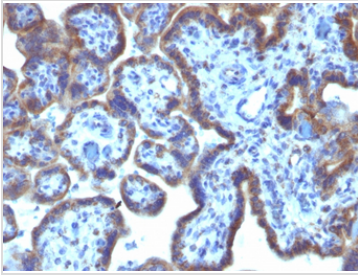
属性

形式	Liquid
存储溶液	PBS, 0.05% BSA
保存剂	0.05% Sodium azide
存放说明	Store as concentrated solution. Centrifuge briefly prior to opening vial. For short-term storage (1-2 weeks), store at 4°C. For long-term storage, aliquot and store at -20°C or below. Avoid multiple freeze-thaw cycles.
浓度	0.2 mg/ml (Please refer to the vial label for the specific concentration.)
偶联	Unconjugated
注意事项	仅供实验室使用。不适用于人类或动物的任何临床, 治疗或诊断用途。不适合动物或人类食用。

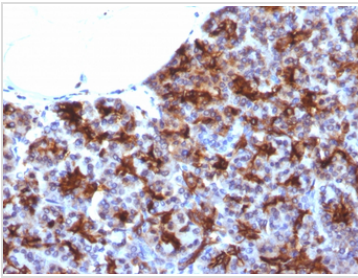


For full product information, images and publications, please visit our [website](#).

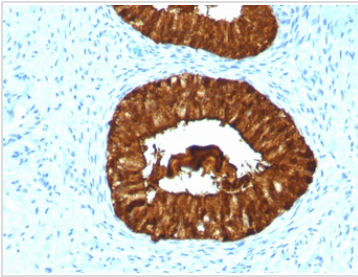
產品圖片

**GTX34815 IHC-P Image**

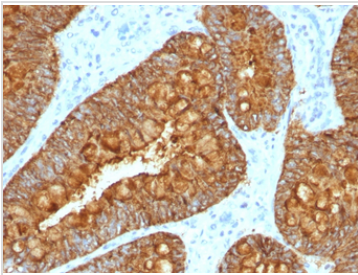
IHC-P analysis of human placenta tissue using GTX34815 MAML3 antibody [MAML3/1303].

**GTX34815 IHC-P Image**

IHC-P analysis of human pancreas tissue using GTX34815 MAML3 antibody [MAML3/1303].

**GTX34815 IHC-P Image**

IHC-P analysis of human cervical carcinoma tissue using GTX34815 MAML3 antibody [MAML3/1303].

**GTX34815 IHC-P Image**

IHC-P analysis of human colon carcinoma tissue using GTX34815 MAML3 antibody [MAML3/1303].



For full product information, images and publications, please visit our [website](#).