

Casein antibody

Cat. No. GTX37769

宿主	Rabbit
克隆	Polyclonal
同种型	IgG
实验应用	WB, ICC/IF, IHC-P, ELISA
种属反应	Bovine

引用文献 (4)

实验应用

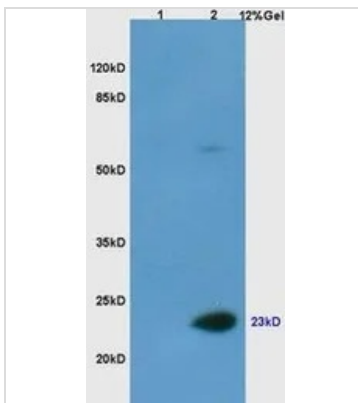
应用说明

P-ELISA:1:500-1000, WB:1:100-500, IHC-P:1:100-500

属性

形式	Liquid
存储溶液	PBS; 1% BSA
保存剂	0.1% Sodium azide
存放说明	Store as concentrated solution. Centrifuge briefly prior to opening vial. For short-term storage (1-2 weeks), store at 4°C. For long-term storage, aliquot and store at -20°C or below. Avoid multiple freeze-thaw cycles.
浓度	0.13 mg/ml (Please refer to the vial label for the specific concentration.)
偶联	Unconjugated
RRID	AB_11170597
注意事项	仅供实验室使用。不适用于人类或动物的任何临床, 治疗或诊断用途。不适合动物或人类食用。

产品图片

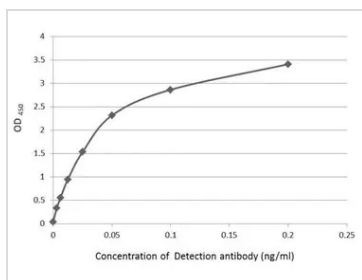


GTX37769 WB Image

WB analysis of lysates from (1) mouse brain and (2) non-fat dry milk lysates (45ug per lane) using Casein antibody.



For full product information, images and publications, please visit our [website](#).



GTX37769 ELISA Image

An ELISA plate is coated with 50 μ L of non-fat milk at 10 μ g/mL. The coated protein is detected with anti-Casein antibody (GTX37769) at concentration ranged from 0.2 to 0.03125 ng/mL.



For full product information, images and publications, please visit our [website](#).