

Lactoperoxidase antibody (HRP)

Cat. No. GTX40571

宿主	Sheep
克隆	Polyclonal
同种型	IgG
实验应用	WB, IP, Dot, ELISA
种属反应	Bovine

实验应用

应用说明

*最佳稀释倍数与浓度应由研究人员确认

Suggested dilution	Recommended dilution
WB	1:500-1:5000
IP	1:100
Dot	Assay dependent
ELISA	1:5000-1:20000

以下为常规应用缩写的中文注解

WB: 免疫印迹

ICC/IF: 细胞染色

IHC-P: 石蜡切片

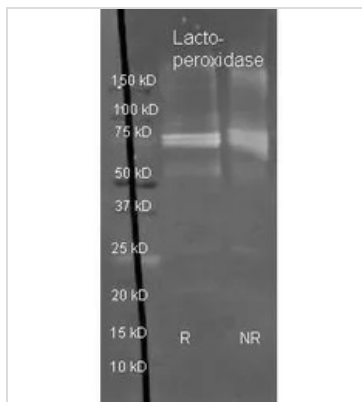
IHC-Fr: 冰冻切片

属性

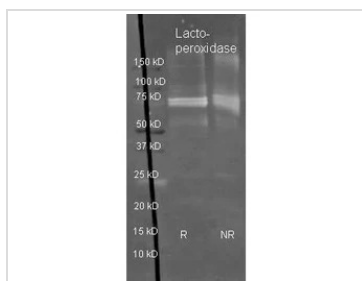
形式	Liquid
存储溶液	20mM Potassium Phosphate, 150mM NaCl, 1% BSA
保存剂	0.01% Gentamicin Sulfate
存放说明	Store as concentrated solution. Centrifuge briefly prior to opening vial. For short-term storage (1-2 weeks), store at 4°C. For long-term storage, aliquot and store at -20°C or below. Avoid multiple freeze-thaw cycles.
浓度	10 mg/ml (Please refer to the vial label for the specific concentration.)
偶联	Horseradish peroxidase(HRP)
注意事项	仅供实验室使用。不适用于人类或动物的任何临床、治疗或诊断用途。不适合动物或人类食用。



For full product information, images and publications, please visit our [website](#).

產品图片

GTX40571 WB Image

Genetex Sheep anti Lactoperoxidase antibody was used to detect Lactoperoxidase under reducing (R) and non-reducing (NR) conditions. Reduced samples of purified target proteins contained 4% BME and were boiled for 5 minutes. Samples of ~1ug of protein per lane were run by SDS-PAGE. Protein was transferred to nitrocellulose and probed with 1:3000 dilution of primary antibody (ON 4 C).


GTX40571 WB Image

WB analysis of reduced (R) and non-reduced (NR) bovine lactoperoxidase protein using GTX40571 Lactoperoxidase antibody (HRP).

Loading : 1 μ g

Dilution : 1:3000



For full product information, images and publications, please visit our [website](#).