

Acid Phosphatase antibody (HRP)

Cat. No. GTX41017

宿主	Rabbit
克隆	Polyclonal
同种型	IgG
实验应用	WB, Dot, ELISA
种属反应	Potato

实验应用

应用说明

*最佳稀释倍数与浓度应由研究人员确认

Suggested dilution	Recommended dilution
WB	1:500-1:2000
Dot	Assay dependent
ELISA	1:4000-1:20000

以下为常规应用缩写的中文注解

WB: 免疫印迹

ICC/IF: 细胞染色

IHC-P: 石蜡切片

IHC-Fr: 冰冻切片

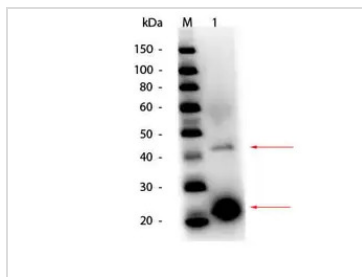
属性

形式	Liquid
存储溶液	20mM Potassium Phosphate, 150mM NaCl
保存剂	0.01% Gentamicin Sulfate
存放说明	Store as concentrated solution. Centrifuge briefly prior to opening vial. For short-term storage (1-2 weeks), store at 4°C. For long-term storage, aliquot and store at -20°C or below. Avoid multiple freeze-thaw cycles.
浓度	Batch dependent (Please refer to the vial label for the specific concentration.)
偶联	Horseradish peroxidase(HRP)
注意事项	仅供实验室使用。不适用于人类或动物的任何临床, 治疗或诊断用途。不适合动物或人类食用。



For full product information, images and publications, please visit our [website](#).

產品图片

**GTX41017 WB Image**

WB analysis of Potato acid phosphatase protein using GTX41017 Acid Phosphatase antibody (HRP).

Loading : 50 ng

Dilution : 1:1000



For full product information, images and publications, please visit our [website](#).