

Mouse Anti-Human IgE antibody [1A2] (HRP)

Cat. No. GTX43311

宿主	Mouse
克隆	Monoclonal
同种型	IgG1
实验应用	WB, ELISA
种属反应	Human

Package
500 µg

实验应用

应用说明

*最佳稀释倍数与浓度应由研究人员确认

Suggested dilution	Recommended dilution
WB	Assay dependent
ELISA	1/500-1/1,000

以下为常规应用缩写的中文注解

WB: 免疫印迹

ICC/IF: 细胞染色

IHC-P: 石蜡切片

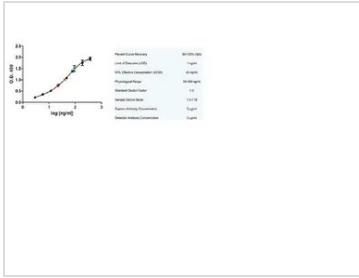
IHC-Fr: 冰冻切片

产品说明 This antibody recognises human IgE and shows no cross-reactivity to other human immunoglobulin classes or subclasses.

属性

形式	Liquid
存储溶液	PBS
保存剂	0.01% Thimerosal
存放说明	Store as concentrated solution. Centrifuge briefly prior to opening vial. For short-term storage (1-2 weeks), store at 4°C. For long-term storage, aliquot and store at -20°C or below. Avoid multiple freeze-thaw cycles.
浓度	1.0 mg/ml (Please refer to the vial label for the specific concentration.)
免疫原	Chimaeric human IgE.
纯化方式	Protein A purified
偶联	Horseradish peroxidase(HRP)
注意事项	仅供实验室使用。不适用于人类或动物的任何临床, 治疗或诊断用途。不适合动物或人类食用。

For full product information, images and publications, please visit our [website](#).

產品图片

GTX43311 ELISA Image

Sandwich ELISA analysis of human IgE using Mouse anti Human IgE (GTX40443) as a capture reagent and horseradish peroxidase conjugated Mouse anti Human IgE (GTX43311) as a detection reagent with purified human IgE as antigen. A serum sample at 1/10 (blue) and 1/5 (green) and a plasma sample at 1/10 (red) and 1/5 (orange) is shown



For full product information, images and publications, please visit our [website](#).