

## OAZ2 antibody, Internal

Cat. No. GTX45061

宿主	Rabbit
克隆	Polyclonal
同种型	IgG
实验应用	WB
种属反应	Human

引用文献 (1)

## 实验应用

## 应用说明

\*最佳稀释倍数与浓度应由研究人员确认

Suggested dilution	Recommended dilution
WB	0.2-2.5 ug/ml

以下为常规应用缩写的中文注解

WB: 免疫印迹

ICC/IF: 细胞染色

IHC-P: 石蜡切片

IHC-Fr: 冰冻切片

## 属性

形式 Liquid

存储溶液 PBS, 2% Sucrose

保存剂 0.09% Sodium azide

存放说明 Store as concentrated solution. Centrifuge briefly prior to opening vial. For short-term storage (1-2 weeks), store at 4°C. For long-term storage, aliquot and store at -20°C or below. Avoid multiple freeze-thaw cycles.

浓度 0.5-1 mg/ml (Please refer to the vial label for the specific concentration.)

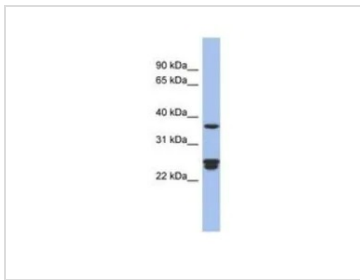
偶联 Unconjugated

注意事项 仅供实验室使用。不适用于人类或动物的任何临床, 治疗或诊断用途。不适合动物或人类食用。



For full product information, images and publications, please visit our [website](#).

## 產品圖片

**GTX45061 WB Image**

WB analysis of human fetal liver tissue using GTX45061 OAZ2 antibody at 0.2-1 $\mu$ g/ml.



For full product information, images and publications, please visit our [website](#).