

CRISPLD2 antibody, N-term

Cat. No. GTX45942

| | |
|------|--------------|
| 宿主 | Rabbit |
| 克隆 | Polyclonal |
| 同种型 | IgG |
| 实验应用 | WB |
| 种属反应 | Human, Mouse |

实验应用

应用说明

*最佳稀释倍数与浓度应由研究人员确认

| Suggested dilution | Recommended dilution |
|--------------------|----------------------|
| WB | 0.2-2.5 ug/ml |

以下为常规应用缩写的中文注解

WB: 免疫印迹

ICC/IF: 细胞染色

IHC-P: 石蜡切片

IHC-Fr: 冰冻切片

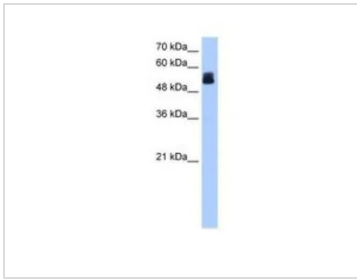
属性

| | |
|------|--|
| 形式 | Liquid |
| 存储溶液 | PBS, 2% Sucrose |
| 保存剂 | 0.09% Sodium azide |
| 存放说明 | Store as concentrated solution. Centrifuge briefly prior to opening vial. For short-term storage (1-2 weeks), store at 4°C. For long-term storage, aliquot and store at -20°C or below. Avoid multiple freeze-thaw cycles. |
| 浓度 | 0.5-1 mg/ml (Please refer to the vial label for the specific concentration.) |
| 偶联 | Unconjugated |
| 注意事项 | 仅供实验室使用。不适用于人类或动物的任何临床, 治疗或诊断用途。不适合动物或人类食用。 |

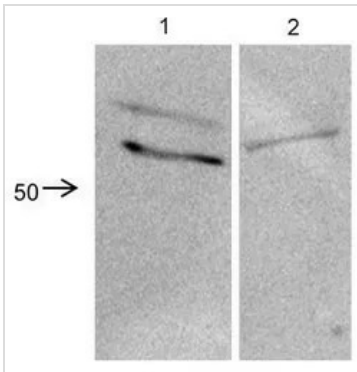


For full product information, images and publications, please visit our [website](#).

產品圖片

**GTX45942 WB Image**

WB analysis of Jurkat cells using GTX45942 CRISPLD2 antibody at 0.2-1 μ g/ml.

**GTX45942 WB Image**

WB analysis of human and mouse lung cells using GTX45942 CRISPLD2 antibody at 0.5 μ g/ml.

Lane 1 : Human lung fibroblast cells (40ug)

Lane 2 : Mouse lung cells (40ug)



For full product information, images and publications, please visit our [website](#).