

GTPBP2 antibody, N-term

Cat. No. GTX46998

宿主	Rabbit
克隆	Polyclonal
同种型	IgG
实验应用	WB
种属反应	Human

实验应用

应用说明

*最佳稀释倍数与浓度应由研究人员确认

Suggested dilution	Recommended dilution
WB	0.2-2.5 ug/ml

以下为常规应用缩写的中文注解

WB: 免疫印迹

ICC/IF: 细胞染色

IHC-P: 石蜡切片

IHC-Fr: 冰冻切片

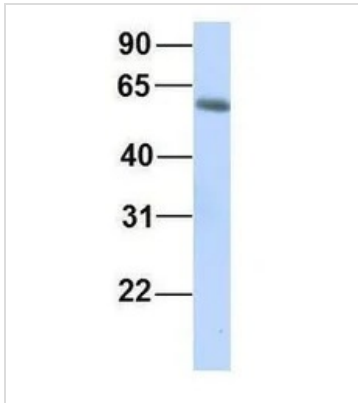
属性

形式	Liquid
存储溶液	PBS, 2% Sucrose
保存剂	0.09% Sodium azide
存放说明	Store as concentrated solution. Centrifuge briefly prior to opening vial. For short-term storage (1-2 weeks), store at 4°C. For long-term storage, aliquot and store at -20°C or below. Avoid multiple freeze-thaw cycles.
浓度	0.5-1 mg/ml (Please refer to the vial label for the specific concentration.)
偶联	Unconjugated
注意事项	仅供实验室使用。不适用于人类或动物的任何临床, 治疗或诊断用途。不适合动物或人类食用。

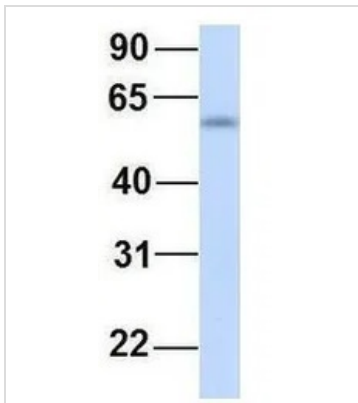


For full product information, images and publications, please visit our [website](#).

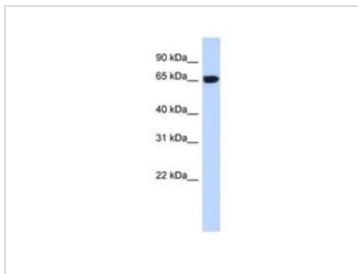
產品圖片

**GTX46998 WB Image**

WB analysis of human fetal lung tissue using GTX46998 GTPBP2 antibody at 1 μ g/ml.

**GTX46998 WB Image**

WB analysis of human fetal liver tissue using GTX46998 GTPBP2 antibody at 1 μ g/ml.

**GTX46998 WB Image**

WB analysis of transfected 293T cells using GTX46998 GTPBP2 antibody at 0.2-1 μ g/ml.



For full product information, images and publications, please visit our [website](#).