

## SF3A1 antibody, N-term

Cat. No. GTX47356

|      |            |
|------|------------|
| 宿主   | Rabbit     |
| 克隆   | Polyclonal |
| 同种型  | IgG        |
| 实验应用 | WB         |
| 种属反应 | Human      |

## 实验应用

## 应用说明

\*最佳稀释倍数与浓度应由研究人员确认

| Suggested dilution | Recommended dilution |
|--------------------|----------------------|
| WB                 | 0.2-2.5 ug/ml        |

以下为常规应用缩写的中文注解

WB: 免疫印迹

ICC/IF: 细胞染色

IHC-P: 石蜡切片

IHC-Fr: 冰冻切片

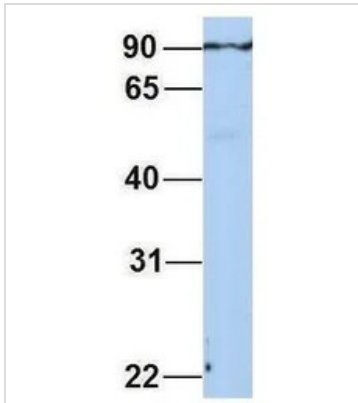
## 属性

|      |  |
|------|--|
| 形式   | Liquid   |
| 存储溶液 | PBS, 2% Sucrose  |
| 保存剂  | 0.09% Sodium azide   |
| 存放说明 | Store as concentrated solution. Centrifuge briefly prior to opening vial. For short-term storage (1-2 weeks), store at 4°C. For long-term storage, aliquot and store at -20°C or below. Avoid multiple freeze-thaw cycles. |
| 浓度   | 0.5-1 mg/ml (Please refer to the vial label for the specific concentration.)   |
| 偶联   | Unconjugated   |
| 注意事项 | 仅供实验室使用。不适用于人类或动物的任何临床, 治疗或诊断用途。不适合动物或人类食用。  |

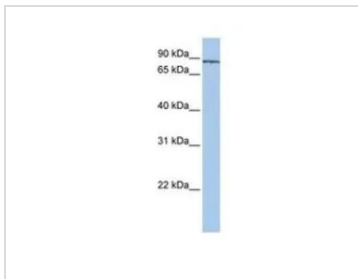


For full product information, images and publications, please visit our [website](#).

## 產品圖片

**GTX47356 WB Image**

WB analysis of human placenta tissue using GTX47356 SF3A1 antibody at 1.0 $\mu$ g/ml.

**GTX47356 WB Image**

WB analysis of Jurkat cells using GTX47356 SF3A1 antibody at 0.2-1 $\mu$ g/ml.



For full product information, images and publications, please visit our [website](#).