

## GAP43 (phospho Ser41) antibody

**Cat. No. GTX48610**

|      |            |
|------|------------|
| 宿主   | Rabbit     |
| 克隆   | Polyclonal |
| 同种型  | IgG        |
| 实验应用 | WB         |
| 种属反应 | Rat        |

## 实验应用

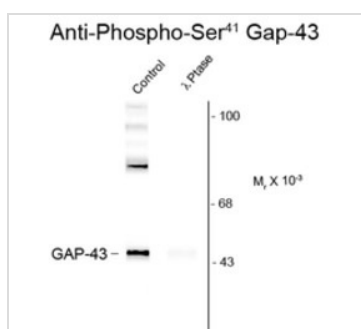
## 应用说明

Optimal working dilutions should be determined experimentally by the end user.

## 属性

|      |  |
|------|--|
| 形式   | Liquid   |
| 存储溶液 | 10mM HEPES, 150mM NaCl, 0.01% BSA, 50% Glycerol  |
| 保存剂  | No preservatives   |
| 存放说明 | Store as concentrated solution. Centrifuge briefly prior to opening vial. For short-term storage (1-2 weeks), store at 4°C. For long-term storage, aliquot and store at -20°C or below. Avoid multiple freeze-thaw cycles. |
| 浓度   | Batch dependent (Please refer to the vial label for the specific concentration.)   |
| 偶联   | Unconjugated   |
| 注意事项 | 仅供实验室使用。不适用于人类或动物的任何临床、治疗或诊断用途。不适合动物或人类食用。   |

## 产品图片



## GTX48610 WB Image

Western blot of rat cortex lysate showing specific immunolabeling of the ~50k Gap-43 protein phosphorylated at Ser41 (Control). The phosphospecificity of this labeling is shown in the second lane (lambda-phosphatase:  $\lambda$ -Ptase).



For full product information, images and publications, please visit our [website](#).