

ASPP1 antibody

Cat. No. GTX48719

宿主	Rabbit
克隆	Polyclonal
同种型	IgG
实验应用	WB, ELISA
种属反应	Human

实验应用

应用说明

*最佳稀释倍数与浓度应由研究人员确认

Suggested dilution	Recommended dilution
WB	1:500-1:3000
ELISA	1:2500-1:10000

以下为常规应用缩写的中文注解

WB: 免疫印迹

ICC/IF: 细胞染色

IHC-P: 石蜡切片

IHC-Fr: 冰冻切片

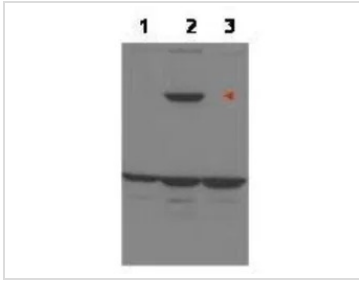
属性

形式	Liquid
存储溶液	20mM Potassium Phosphate, 150mM NaCl
保存剂	0.01% Sodium azide
存放说明	Store as concentrated solution. Centrifuge briefly prior to opening vial. For short-term storage (1-2 weeks), store at 4°C. For long-term storage, aliquot and store at -20°C or below. Avoid multiple freeze-thaw cycles.
浓度	0.33 mg/ml (Please refer to the vial label for the specific concentration.)
偶联	Unconjugated
注意事项	仅供实验室使用。不适用于人类或动物的任何临床，治疗或诊断用途。不适合动物或人类食用。



For full product information, images and publications, please visit our [website](#).

產品图片

**GTX48719 WB Image**

Western blot using GeneTex's affinity purified anti-ASPP1 to detect over-expressed ASPP1 in MCF-7 cells (lane 2, arrowhead). Lane 1 is a non-transfected control. Lane 3 is MCF-7 cells over-expressing ASPP2. Cell extracts were electrophoresed and transferred to nitrocellulose. The membrane was probed with the primary antibody at a 1:1,000 dilution. The identity of the lower MW band at approximately 50kDa is unknown. Primary experimental data indicate that the unknown band intensifies in extracts from p53 siRNA knockdown cells.



For full product information, images and publications, please visit our [website](#).