

AHA-1 antibody

Cat. No. GTX48723

宿主	Rabbit
克隆	Polyclonal
同种型	IgG
实验应用	WB, IP, ELISA, IHC
种属反应	Human, Monkey

实验应用

应用说明

*最佳稀释倍数与浓度应由研究人员确认

Suggested dilution	Recommended dilution
WB	1 µg/mL
IP	Assay dependent
ELISA	1:35000-1:185000
IHC	Assay dependent

以下为常规应用缩写的中文注解

WB: 免疫印迹

ICC/IF: 细胞染色

IHC-P: 石蜡切片

IHC-Fr: 冰冻切片

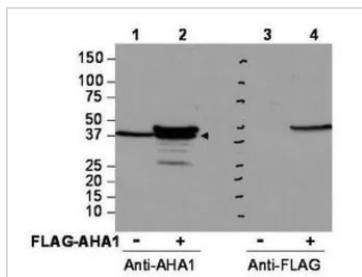
属性

形式	Liquid
存储溶液	20mM Potassium Phosphate, 150mM NaCl
保存剂	0.01% Sodium azide
存放说明	Store as concentrated solution. Centrifuge briefly prior to opening vial. For short-term storage (1-2 weeks), store at 4°C. For long-term storage, aliquot and store at -20°C or below. Avoid multiple freeze-thaw cycles.
浓度	1 mg/ml (Please refer to the vial label for the specific concentration.)
偶联	Unconjugated
注意事项	仅供实验室使用。不适用于人类或动物的任何临床、治疗或诊断用途。不适合动物或人类食用。



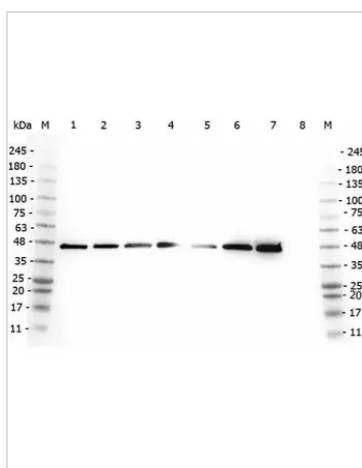
For full product information, images and publications, please visit our [website](#).

產品圖片



GTX48723 WB Image

Western blot using GeneTex's affinity purified anti-AHA1 antibody shows detection of AHA1 in Cos7 cells. For Lanes 2 and 4, Cos7 cells were transfected with pcDNA3-FLAG-AHA1. For Lanes 1 and 3, Cos7 cells were not transfected. Extracts (40 µg per lane) were electrophoresed and transferred to nitrocellulose. The membrane was probed with anti-AHA1 (lanes 1 and 2, 1:2,000 dilution) or anti-FLAG (lanes 3 and 4). The lower band seen in anti-AHA1 blotting (arrowhead) is endogenous AHA1.



GTX48723 WB Image

WB analysis of various samples using GTX48723 AHA-1 antibody.

- Lane 1 : 293T whole cell lysate
- Lane 2 : HeLa whole cell lysate
- Lane 3 : MCF-7 whole cell lysate
- Lane 4 : Jurkat whole cell lysate
- Lane 5 : A431 whole cell lysate
- Lane 6 : Raji whole cell lysate
- Lane 7 : Ramos whole cell lysate
- Lane 8 : NIH-3T3 whole cell lysate
- Loading : 35 µg
- Dilution : 1:2000



For full product information, images and publications, please visit our [website](#).