

## Borrelia burgdorferi p39 antibody

**Cat. No. GTX48801**

|      |  |
|------|--|
| 宿主   | Rabbit                                 |
| 克隆   | Polyclonal                             |
| 同种型  | IgG                                    |
| 实验应用 | WB, ELISA                              |
| 种属反应 | Borrelia afzelii, Borrelia burgdorferi |

## 实验应用

## 应用说明

\*最佳稀释倍数与浓度应由研究人员确认

| Suggested dilution | Recommended dilution |
|--------------------|----------------------|
| WB                 | 1:1000               |
| ELISA              | > 1:5000             |

以下为常规应用缩写的中文注解

WB: 免疫印迹

ICC/IF: 细胞染色

IHC-P: 石蜡切片

IHC-Fr: 冰冻切片

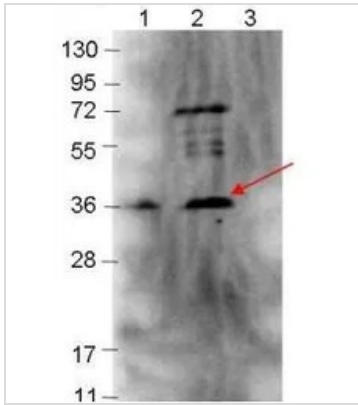
## 属性

|      |  |
|------|--|
| 形式   | Liquid   |
| 存储溶液 | 20mM Potassium Phosphate, 150mM NaCl   |
| 保存剂  | 0.01% Sodium azide   |
| 存放说明 | Store as concentrated solution. Centrifuge briefly prior to opening vial. For short-term storage (1-2 weeks), store at 4°C. For long-term storage, aliquot and store at -20°C or below. Avoid multiple freeze-thaw cycles. |
| 浓度   | 1 mg/ml (Please refer to the vial label for the specific concentration.)   |
| 偶联   | Unconjugated   |
| 注意事项 | 仅供实验室使用。不适用于人类或动物的任何临床、治疗或诊断用途。不适合动物或人类食用。   |



For full product information, images and publications, please visit our [website](#).

## 產品圖片

**GTX48801 WB Image**

Western blot showing detection of 0.1  $\mu\text{g}$  of recombinant p39 protein. Lane 1: Molecular weight markers. Lane 2: MBP-p39 fusion protein (expected MW: 77.8 kDa). Lane 3: MBP alone. Protein was run on a 4-20% gel, then transferred to 0.45  $\mu\text{m}$  nitrocellulose. After blocking with 1% BSA-TTBS overnight at 4°C, primary antibody was used at 1:1000 at room temperature for 30 min. HRP-conjugated Goat-Anti-Rabbit secondary antibody was used at 1:40,000 in blocking buffer and imaged on the VersaDoc MP 4000 imaging system (Bio-Rad).



For full product information, images and publications, please visit our [website](#).