

PSCDBP antibody

Cat. No. GTX48859

宿主	Rabbit
克隆	Polyclonal
同种型	IgG
实验应用	WB, IP, ELISA
种属反应	Human, Mouse, Rat

实验应用

应用说明

*最佳稀释倍数与浓度应由研究人员确认

Suggested dilution	Recommended dilution
WB	1:1000-1:10000
IP	1:100
ELISA	1:5000-1:20000

以下为常规应用缩写的中文注解

WB: 免疫印迹

ICC/IF: 细胞染色

IHC-P: 石蜡切片

IHC-Fr: 冰冻切片

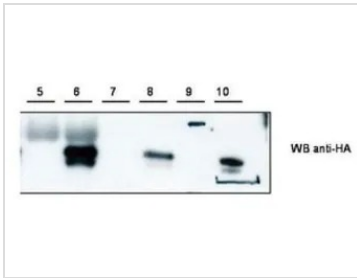
属性

形式	Liquid
存储溶液	20mM Potassium Phosphate, 150mM NaCl
保存剂	0.01% Sodium azide
存放说明	Store as concentrated solution. Centrifuge briefly prior to opening vial. For short-term storage (1-2 weeks), store at 4°C. For long-term storage, aliquot and store at -20°C or below. Avoid multiple freeze-thaw cycles.
浓度	85 mg/ml (Please refer to the vial label for the specific concentration.)
偶联	Unconjugated
注意事项	仅供实验室使用。不适用于人类或动物的任何临床, 治疗或诊断用途。不适合动物或人类食用。



For full product information, images and publications, please visit our [website](#).

產品圖片

**GTX48859 IP Image**

Western blot using GeneTex's anti-Cybr antibody shows detection of recombinant Cybr using anti-HA tag antibody after immunoprecipitation using anti-Cybr. Lane 5 contains lysate from control HEK293 cells. Lane 6 shows IP/WB of HEK293 cells expressing Cybr-HA. Lane 7 and 8 are loaded similarly to lanes 5 and 6 but were immunoprecipitated with anti-HA. Lane 9 contains marker. Lane 10 contains purified CybrHA.



For full product information, images and publications, please visit our [website](#).