

## RAD9A antibody [3A3-A7-F8]

**Cat. No. GTX49140**

宿主	Mouse
克隆	Monoclonal
同种型	IgG2b
实验应用	WB, IP
种属反应	Human, Mouse, Rat, Monkey

## 实验应用

## 应用说明

\*最佳稀释倍数与浓度应由研究人员确认

Suggested dilution	Recommended dilution
WB	Assay dependent
IP	Assay dependent

以下为常规应用缩写的中文注解

WB: 免疫印迹

ICC/IF: 细胞染色

IHC-P: 石蜡切片

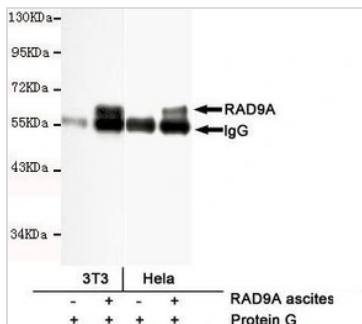
IHC-Fr: 冰冻切片

## 属性

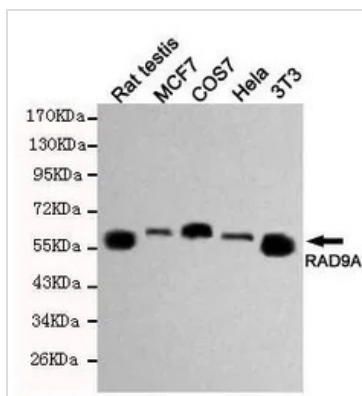
形式	Liquid
存储溶液	PBS, 0.5% BSA, 50% glycerol
保存剂	0.02% Sodium azide
存放说明	Store as concentrated solution. Centrifuge briefly prior to opening vial. For short-term storage (1-2 weeks), store at 4°C. For long-term storage, aliquot and store at -20°C or below. Avoid multiple freeze-thaw cycles.
浓度	Batch dependent (Please refer to the vial label for the specific concentration.)
偶联	Unconjugated
注意事项	仅供实验室使用。不适用于人类或动物的任何临床、治疗或诊断用途。不适合动物或人类食用。



For full product information, images and publications, please visit our [website](#).

**產品圖片**

**GTX49140 IP Image**

IP analysis of 3T3 and HeLa lysates using control IgG and RAD9A antibody. The precipitates were detected by the same RAD9A antibody.


**GTX49140 WB Image**

WB analysis of indicated lysates using RAD9A antibody at a dilution of 1:500.



For full product information, images and publications, please visit our [website](#).