

GAS7 antibody [AT4H8]

Cat. No. GTX50021

宿主	Mouse
克隆	Monoclonal
同种型	IgG1
实验应用	WB, ELISA
种属反应	Human, Mouse

实验应用

应用说明

We recommend the following starting dilutions:

Western Blot: Use at 1:500 ~ 1000.

Optimal working concentrations should be determined experimentally by the end user.

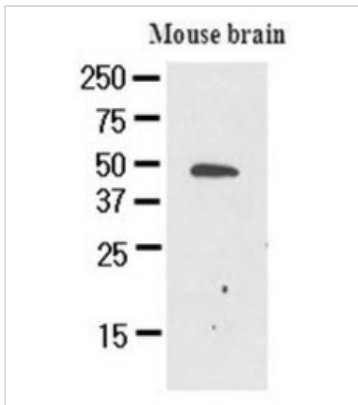
属性

形式	Liquid
存储溶液	PBS
保存剂	0.1% Sodium azide
存放说明	Store as concentrated solution. Centrifuge briefly prior to opening vial. For short-term storage (1-2 weeks), store at 4°C. For long-term storage, aliquot and store at -20°C or below. Avoid multiple freeze-thaw cycles.
浓度	1 mg/ml (Please refer to the vial label for the specific concentration.)
偶联	Unconjugated
注意事项	仅供实验室使用。不适用于人类或动物的任何临床，治疗或诊断用途。不适合动物或人类食用。



For full product information, images and publications, please visit our [website](#).

產品圖片

**GTX50021 WB Image**

The extracts of mouse brain (50ug) were resolved by SDS-PAGE, transferred to NC membrane and probed with anti-human GAS7 (1:500). Proteins were visualized using a goat anti-mouse secondary antibody conjugated to HRP and an ECL detection system.



For full product information, images and publications, please visit our [website](#).