

## HSP105 antibody [J1G12]

Cat. No. GTX50045

宿主	Mouse
克隆	Monoclonal
同种型	IgG2b
实验应用	WB, ELISA
种属反应	Human

## 实验应用

## 应用说明

**We recommend the following starting dilutions:**

Western Blot: Use at 1:1,000 ~ 2,000.

Optimal working concentrations should be determined experimentally by the end user.

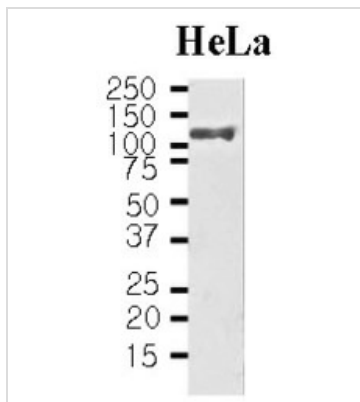
## 属性

形式	Liquid
存储溶液	PBS
保存剂	0.1% Sodium azide
存放说明	Store as concentrated solution. Centrifuge briefly prior to opening vial. For short-term storage (1-2 weeks), store at 4°C. For long-term storage, aliquot and store at -20°C or below. Avoid multiple freeze-thaw cycles.
浓度	1 mg/ml (Please refer to the vial label for the specific concentration.)
偶联	Unconjugated
注意事项	仅供实验室使用。不适用于人类或动物的任何临床，治疗或诊断用途。不适合动物或人类食用。



For full product information, images and publications, please visit our [website](#).

## 產品圖片



### GTX50045 WB Image

Cell lysates of HeLa(30ug) were resolved by SDS-PAGE, transferred to NC membrane and probed with anti-human Hsp105 alpha (1:1,000). Proteins were visualized using a goat anti-mouse secondary antibody conjugated to HRP and an ECL detection system.



For full product information, images and publications, please visit our [website](#).