

JunB (phospho Ser79) antibody

Cat. No. GTX50105

宿主	Rabbit
克隆	Polyclonal
同种型	IgG
实验应用	ICC/IF, IHC-P
种属反应	Human

实验应用

应用说明

*最佳稀释倍数与浓度应由研究人员确认

Suggested dilution	Recommended dilution
ICC/IF	1:100-1:200
IHC-P	1:50-1:100

以下为常规应用缩写的中文注解

WB: 免疫印迹

ICC/IF: 细胞染色

IHC-P: 石蜡切片

IHC-Fr: 冰冻切片

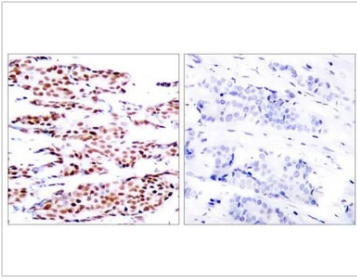
属性

形式	Liquid
存储溶液	PBS, 150mM NaCl, 50% Glycerol
保存剂	0.02% Sodium azide
存放说明	Store as concentrated solution. Centrifuge briefly prior to opening vial. For short-term storage (1-2 weeks), store at 4°C. For long-term storage, aliquot and store at -20°C or below. Avoid multiple freeze-thaw cycles.
浓度	1 mg/ml (Please refer to the vial label for the specific concentration.)
偶联	Unconjugated
注意事项	仅供实验室使用。不适用于人类或动物的任何临床、治疗或诊断用途。不适合动物或人类食用。



For full product information, images and publications, please visit our [website](#).

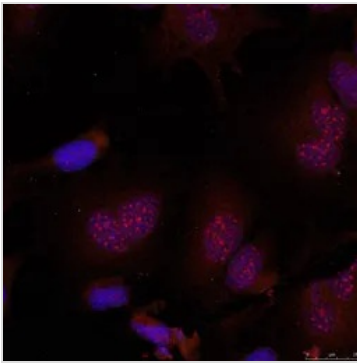
產品圖片

**GTX50105 IHC-P Image**

IHC-P analysis of human breast carcinoma tissue using GTX50105 JunB (phospho Ser79) antibody.

Left : Primary antibody

Right : Primary antibody pre-incubated with the antigen specific peptide

**GTX50105 ICC/IF Image**

ICC/IF analysis of methanol-fixed HeLa cells using GTX50105 JunB (phospho Ser79) antibody.



For full product information, images and publications, please visit our [website](#).