

IKK alpha (phospho Thr23) antibody

Cat. No. GTX50190

| | |
|------|------------|
| 宿主 | Rabbit |
| 克隆 | Polyclonal |
| 同种型 | IgG |
| 实验应用 | WB, IHC-P |
| 种属反应 | Human |

实验应用

应用说明

*最佳稀释倍数与浓度应由研究人员确认

| Suggested dilution | Recommended dilution |
|--------------------|----------------------|
| WB | 1:500-1:1000 |
| IHC-P | 1:50-1:100 |

以下为常规应用缩写的中文注解

WB: 免疫印迹

ICC/IF: 细胞染色

IHC-P: 石蜡切片

IHC-Fr: 冰冻切片

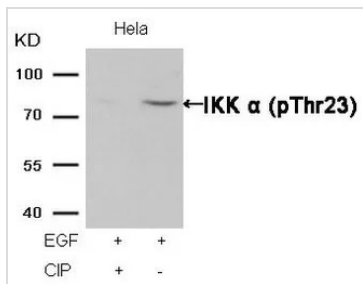
属性

| | |
|------|--|
| 形式 | Liquid |
| 存储溶液 | PBS, 150mM NaCl, 50% Glycerol |
| 保存剂 | 0.02% Sodium azide |
| 存放说明 | Store as concentrated solution. Centrifuge briefly prior to opening vial. For short-term storage (1-2 weeks), store at 4°C. For long-term storage, aliquot and store at -20°C or below. Avoid multiple freeze-thaw cycles. |
| 浓度 | 1 mg/ml (Please refer to the vial label for the specific concentration.) |
| 偶联 | Unconjugated |
| 注意事项 | 仅供实验室使用。不适用于人类或动物的任何临床、治疗或诊断用途。不适合动物或人类食用。 |



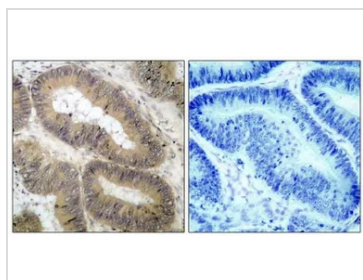
For full product information, images and publications, please visit our [website](#).

產品圖片



GTX50190 WB Image

WB analysis of extracts from HeLa cells treated with EGF or calf intestinal phosphatase (CIP) using GTX50190 IKK alpha (phospho Thr23) antibody.

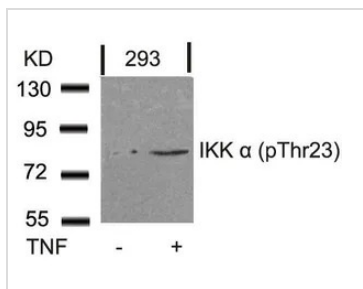


GTX50190 IHC-P Image

IHC-P analysis of human colon carcinoma tissue using GTX50190 IKK alpha (phospho Thr23) antibody.

Left : Primary antibody

Right : Primary antibody pre-incubated with the antigen specific peptide



GTX50190 WB Image

WB analysis of extracts from 293 cells untreated or treated with TNF using GTX50190 IKK alpha (phospho Thr23) antibody.



For full product information, images and publications, please visit our [website](#).