

Cortactin (phospho Tyr466) antibody

Cat. No. GTX50295

宿主	Rabbit
克隆	Polyclonal
同种型	IgG
实验应用	WB
种属反应	Human

实验应用

应用说明

*最佳稀释倍数与浓度应由研究人员确认

Suggested dilution	Recommended dilution
WB	1:500-1:1000

以下为常规应用缩写的中文注解

WB: 免疫印迹

ICC/IF: 细胞染色

IHC-P: 石蜡切片

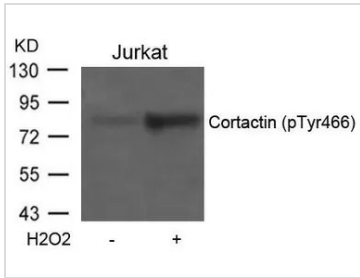
IHC-Fr: 冰冻切片

属性

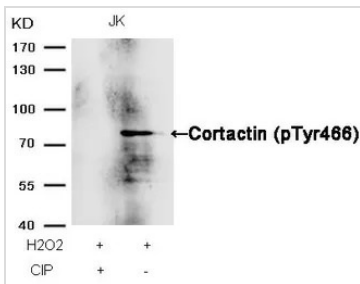
形式	Liquid
存储溶液	PBS, 150mM NaCl, 50% Glycerol
保存剂	0.02% Sodium azide
存放说明	Store as concentrated solution. Centrifuge briefly prior to opening vial. For short-term storage (1-2 weeks), store at 4°C. For long-term storage, aliquot and store at -20°C or below. Avoid multiple freeze-thaw cycles.
浓度	1 mg/ml (Please refer to the vial label for the specific concentration.)
偶联	Unconjugated
注意事项	仅供实验室使用。不适用于人类或动物的任何临床, 治疗或诊断用途。不适合动物或人类食用。



For full product information, images and publications, please visit our [website](#).

產品图片

GTX50295 WB Image

WB analysis of extracts from Jurkat cells untreated or treated with H₂O₂ using GTX50295 Cortactin (phospho Tyr466) antibody.


GTX50295 WB Image

WB analysis of extracts from JK cells treated with H₂O₂ or calf intestinal phosphatase (CIP) using GTX50295 Cortactin (phospho Tyr466) antibody.



For full product information, images and publications, please visit our [website](#).