

AKT (phospho Tyr315) antibody

Cat. No. GTX50869

宿主	Rabbit
克隆	Polyclonal
同种型	IgG
实验应用	WB, ICC/IF, IHC-P
种属反应	Human, Mouse

实验应用

应用说明

*最佳稀释倍数与浓度应由研究人员确认

Suggested dilution	Recommended dilution
WB	1:500-1:1000
ICC/IF	1:100-1:200
IHC-P	1:50-1:100

以下为常规应用缩写的中文注解

WB: 免疫印迹

ICC/IF: 细胞染色

IHC-P: 石蜡切片

IHC-Fr: 冰冻切片

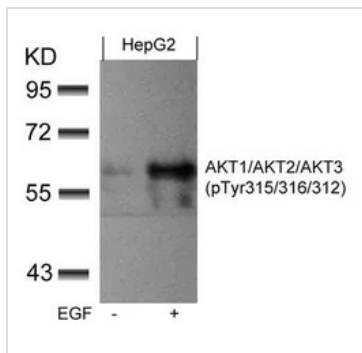
属性

形式	Liquid
存储溶液	PBS, 150mM NaCl, 50% Glycerol
保存剂	0.02% Sodium azide
存放说明	Store as concentrated solution. Centrifuge briefly prior to opening vial. For short-term storage (1-2 weeks), store at 4°C. For long-term storage, aliquot and store at -20°C or below. Avoid multiple freeze-thaw cycles.
浓度	1 mg/ml (Please refer to the vial label for the specific concentration.)
偶联	Unconjugated
注意事项	仅供实验室使用。不适用于人类或动物的任何临床, 治疗或诊断用途。不适合动物或人类食用。



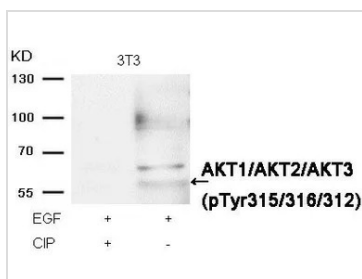
For full product information, images and publications, please visit our [website](#).

產品圖片



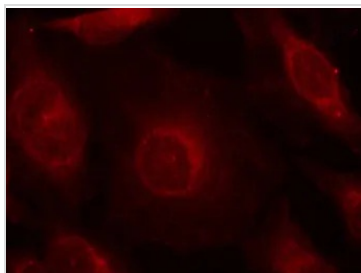
GTX50869 WB Image

WB analysis of extracts from HepG2 cells untreated or treated with EGF using GTX50869 AKT (phospho Tyr315) antibody.



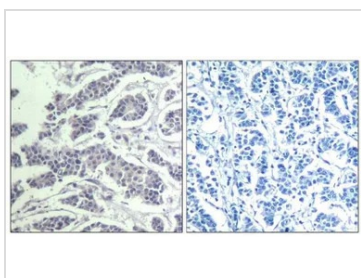
GTX50869 WB Image

WB analysis of extracts from 3T3 cells treated with EGF or calf intestinal phosphatase (CIP) using GTX50869 AKT (phospho Tyr315) antibody.



GTX50869 ICC/IF Image

ICC/IF analysis of methanol-fixed HeLa cells using GTX50869 AKT (phospho Tyr315) antibody.



GTX50869 IHC-P Image

IHC-P analysis of human breast carcinoma tissue using GTX50869 AKT (phospho Tyr315) antibody.
 Left : Primary antibody
 Right : Primary antibody pre-incubated with the antigen specific peptide



For full product information, images and publications, please visit our [website](#).