

CaMK2 beta/ gamma/ delta (phospho Thr287) antibody

Cat. No. GTX52342

宿主	Rabbit
克隆	Polyclonal
同种型	IgG
实验应用	WB, IHC
种属反应	Human, Mouse, Rat

引用文献 (4)

实验应用

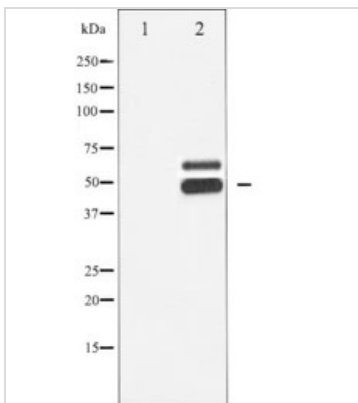
应用说明

WB 1:500-1:2000, IHC 1:50-1:200

属性

形式	Liquid
存储溶液	PBS, 150mM NaCl, 50% Glycerol
保存剂	0.02% Sodium azide
存放说明	Store as concentrated solution. Centrifuge briefly prior to opening vial. For short-term storage (1-2 weeks), store at 4°C. For long-term storage, aliquot and store at -20°C or below. Avoid multiple freeze-thaw cycles.
浓度	1 mg/ml (Please refer to the vial label for the specific concentration.)
偶联	Unconjugated
RRID	AB_2887794
注意事项	仅供实验室使用。不适用于人类或动物的任何临床, 治疗或诊断用途。不适合动物或人类食用。

产品图片

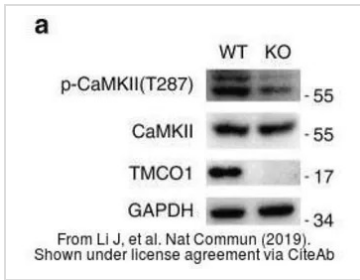


GTX52342 WB Image

Western blot analysis of CaMK2- beta/ gamma/ delta phosphorylation expression in Rat braintissue lysates, The lane on the left is treated with the antigen-specific peptide.

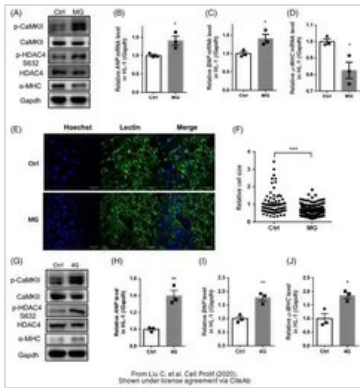


For full product information, images and publications, please visit our [website](#).



GTX52342 WB Image

The data was published in the journal Nat Commun in 2019. [PMID: 30962442](https://pubmed.ncbi.nlm.nih.gov/30962442/)



GTX52342 WB Image

The data was published in the journal Cell Prolif in 2020. [PMID: 32101357](https://pubmed.ncbi.nlm.nih.gov/32101357/)



For full product information, images and publications, please visit our [website](https://www.genetex.com).