

SARS-CoV-2 (COVID-19) Spike overexpression 293T whole cell lysate

Cat. No. GTX535664

实验应用	WB, ELISA
Species	SARS Coronavirus 2

Package
200 µg

产品说明

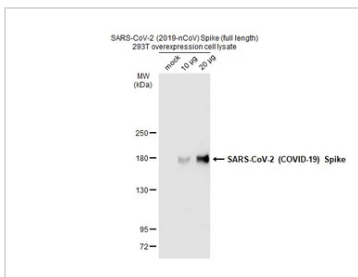
摘要

Whole-cell lysate of 293T cells overexpressing SARS-CoV-2 spike protein (full-length, no tag). The translated amino acid sequence is based on QHD43416.1. Lysate prepared in RIPA buffer with no reducing agents and is unboiled. Please see matched control 293T lysate ([GTX535673](#)).

属性

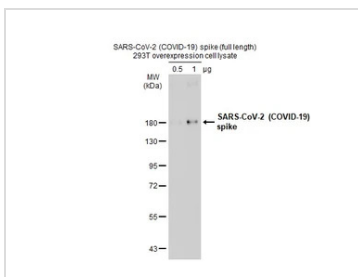
形式	Liquid
存储溶液	50 mM Tris-HCl (pH8.0), 150 mM NaCl, 0.5% sodium deoxycholate, 1% Triton X-100, 0.25% SDS, 1 mM PMSF, 5 µg/ml Leupeptin, 2 µg/ml Aprotinin, 1 µg/ml Pepstatin A
保存剂	0.025% ProClin 300
存放说明	Store as concentrated solution. Centrifuge briefly prior to opening vial. Aliquot and store at -20°C or below. Avoid multiple freeze-thaw cycles.
浓度	1 mg/ml (Please refer to the vial label for the specific concentration.)
注意事项	仅供实验室使用。不适用于人类或动物的任何临床、治疗或诊断用途。不适合动物或人类食用。

产品图片



GTX535664 WB Image

Non-transfected and transfected 293T whole cell extracts were separated by 5% SDS-PAGE, and the membrane was blotted with SARS-CoV-2 (COVID-19) Spike antibody (GTX135356) diluted at 1:5000. The HRP-conjugated anti-rabbit IgG antibody (GTX213110-01) was used to detect the primary antibody.

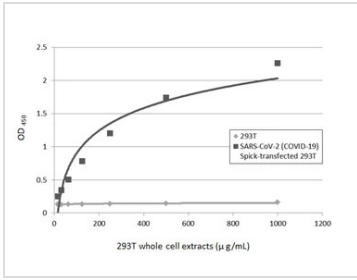


GTX535664 WB Image

SARS-CoV-2 (COVID-19) spike 293T overexpression cell lysates (GTX535664) were separated by 7.5% SDS-PAGE, and the membrane was blotted with SARS-CoV / SARS-CoV-2 (COVID-19) spike antibody [1A9] (GTX632604) diluted at 1:1000. The HRP-conjugated anti-mouse IgG antibody (GTX213111-01) was used to detect the primary antibody, and the signal was developed with Trident ECL plus-Enhanced.



For full product information, images and publications, please visit our [website](#).


GTX535664 ELISA Image

Sandwich ELISA detection of non-transfected (GTX535673) and SARS-CoV-2 spike (full length) transfected (GTX535664) 293T whole cell extracts using SARS-CoV-2 (COVID-19) Spike S1 antibody [GT263] (GTX635708) as capture antibody at concentration of 5 µg/mL and SARS-CoV-2 (COVID-19) Spike S1 antibody [HL263] (GTX635672) as detection antibody at concentration of 1 µg/mL. Rabbit IgG antibody (HRP) (GTX213110-01) was diluted at 1:10000 and used to detect the primary antibody.



For full product information, images and publications, please visit our [website](#).