

NFkB p105/p50 (phospho Ser337) antibody

Cat. No. GTX54547

宿主	Rabbit
克隆	Polyclonal
同种型	IgG
实验应用	WB
种属反应	Human, Mouse, Rat

引用文献 (1)

实验应用

应用说明

*最佳稀释倍数与浓度应由研究人员确认

Suggested dilution	Recommended dilution
--------------------	----------------------

WB	1:500 - 1:2000
----	----------------

以下为常规应用缩写的中文注解

WB: 免疫印迹

ICC/IF: 细胞染色

IHC-P: 石蜡切片

IHC-Fr: 冰冻切片

属性

形式	Liquid
----	--------

存储溶液	PBS, 50% Glycerol
------	-------------------

保存剂	0.02% Sodium azide
-----	--------------------

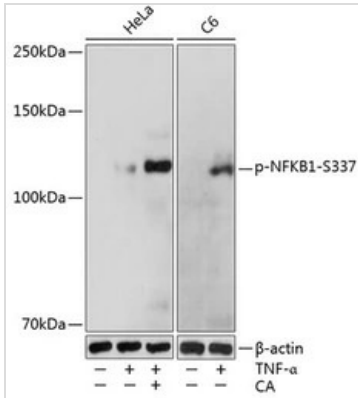
存放说明	Store as concentrated solution. Centrifuge briefly prior to opening vial. For short-term storage (1-2 weeks), store at 4°C. For long-term storage, aliquot and store at -20°C or below. Avoid multiple freeze-thaw cycles.
------	--

浓度	Batch dependent (Please refer to the vial label for the specific concentration.)
----	--

偶联	Unconjugated
----	--------------

注意事项	仅供实验室使用。不适用于人类或动物的任何临床, 治疗或诊断用途。不适合动物或人类食用。
------	---

For full product information, images and publications, please visit our [website](#).

產品圖片

GTX54547 WB Image

WB analysis of HeLa cells treated by TNF- α (20 ng/mL) and Calyculin A (100 nM) at 37°C for 10 minutes and C6 cells treated by TNF- α (20 ng/mL) at 37°C for 10 minutes using GTX54547 NFKB p105/p50 (phospho Ser337) antibody.

Dilution : 1:1000

Loading : 25 μ g per lane



For full product information, images and publications, please visit our [website](#).