

## Bcl-2 (phospho Thr69) antibody

**Cat. No. GTX55105**

宿主	Rabbit
克隆	Polyclonal
同种型	IgG
实验应用	WB, IHC-P
种属反应	Human, Mouse, Rat

## 实验应用

## 应用说明

\*最佳稀释倍数与浓度应由研究人员确认

Suggested dilution	Recommended dilution
WB	1:500 - 1:1000
IHC-P	1:100 - 1:200

以下为常规应用缩写的中文注解

WB: 免疫印迹

ICC/IF: 细胞染色

IHC-P: 石蜡切片

IHC-Fr: 冰冻切片

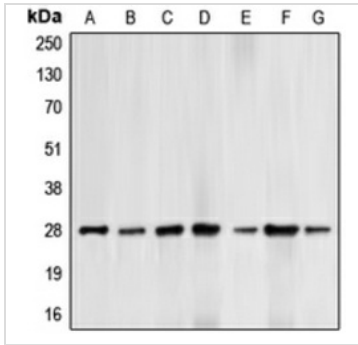
## 属性

形式	Liquid
存储溶液	0.42% Potassium Phosphate, 0.87% NaCl, 30% Glycerol
保存剂	0.01% Sodium azide
存放说明	Store as concentrated solution. Centrifuge briefly prior to opening vial. For short-term storage (1-2 weeks), store at 4°C. For long-term storage, aliquot and store at -20°C or below. Avoid multiple freeze-thaw cycles.
浓度	Batch dependent (Please refer to the vial label for the specific concentration.)
偶联	Unconjugated
注意事项	仅供实验室使用。不适用于人类或动物的任何临床，治疗或诊断用途。不适合动物或人类食用。

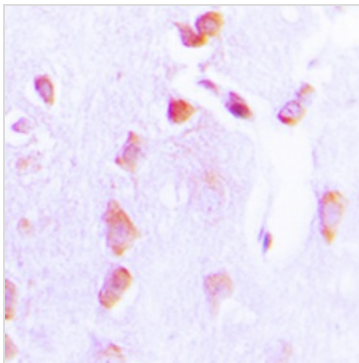


For full product information, images and publications, please visit our [website](#).

## 產品圖片

**GTX55105 WB Image**

WB analysis of UV-treated HepG2 (A), HeLa (B), HL60 (C), THP1 (D), paclitaxel-treated Jurkat (E), H<sub>2</sub>O<sub>2</sub>-treated NIH3T3(F), H<sub>2</sub>O<sub>2</sub>-treated PC12(G) whole cell lysates using GTX55105 Bcl-2 (phospho Thr69) antibody.

**GTX55105 IHC-P Image**

IHC-P analysis of formalin fixed human brain tissue section using GTX55105 Bcl-2 (phospho Thr69) antibody.

Antigen retrieval : Heat mediated antigen retrieval with sodium citrate buffer (pH 6.0)



For full product information, images and publications, please visit our [website](#).