

GANP antibody

Cat. No. GTX55906

宿主	Rabbit
克隆	Polyclonal
同种型	IgG
实验应用	WB, IHC-P
种属反应	Human, Mouse, Rat

实验应用

应用说明

*最佳稀释倍数与浓度应由研究人员确认

Suggested dilution	Recommended dilution
WB	1:500 - 1:1000
IHC-P	1:100 - 1:200

以下为常规应用缩写的中文注解

WB: 免疫印迹

ICC/IF: 细胞染色

IHC-P: 石蜡切片

IHC-Fr: 冰冻切片

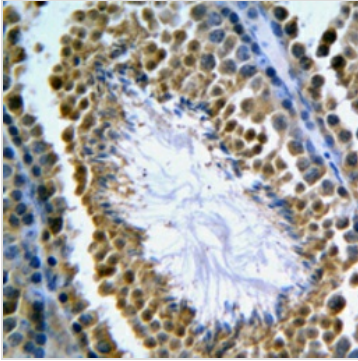
属性

形式	Liquid
存储溶液	0.42% Potassium Phosphate, 0.87% NaCl, 30% Glycerol
保存剂	0.01% Sodium azide
存放说明	Store as concentrated solution. Centrifuge briefly prior to opening vial. For short-term storage (1-2 weeks), store at 4°C. For long-term storage, aliquot and store at -20°C or below. Avoid multiple freeze-thaw cycles.
浓度	Batch dependent (Please refer to the vial label for the specific concentration.)
偶联	Unconjugated
注意事项	仅供实验室使用。不适用于人类或动物的任何临床，治疗或诊断用途。不适合动物或人类食用。

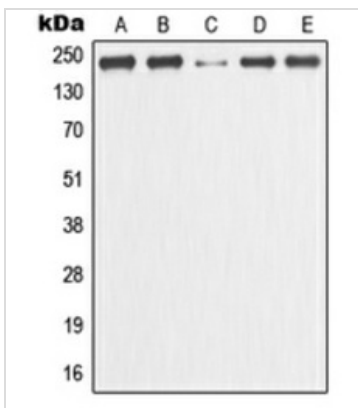


For full product information, images and publications, please visit our [website](#).

產品圖片

**GTX55906 IHC-P Image**

IHC-P analysis of formalin fixed human tonsil tissue section using GTX55906 GANP antibody.
Antigen retrieval : Heat mediated antigen retrieval with sodium citrate buffer (pH 6.0)

**GTX55906 WB Image**

WB analysis of HeLa (A), MCF7 (B), Raw264.7 (C), mouse liver (D), rat kidney (E) whole cell lysates using GTX55906 GANP antibody.



For full product information, images and publications, please visit our [website](#).