

PXR antibody

Cat. No. GTX57230

宿主	Rabbit
克隆	Polyclonal
同种型	IgG
实验应用	WB, IHC-P, FCM
种属反应	Human, Mouse, Rat, Pig

实验应用

应用说明

*最佳稀释倍数与浓度应由研究人员确认

Suggested dilution	Recommended dilution
WB	1:300-1:1000
IHC-P	1:200-1:400
FCM	Assay dependent

以下为常规应用缩写的中文注解

WB: 免疫印迹

ICC/IF: 细胞染色

IHC-P: 石蜡切片

IHC-Fr: 冰冻切片

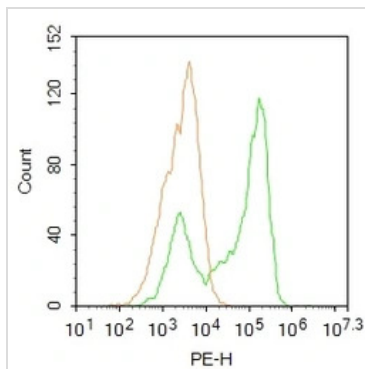
属性

形式	Liquid
存储溶液	10mM TBS, 1% BSA, 50% Glycerol
保存剂	0.03% Proclin300
存放说明	Store as concentrated solution. Centrifuge briefly prior to opening vial. For short-term storage (1-2 weeks), store at 4°C. For long-term storage, aliquot and store at -20°C or below. Avoid multiple freeze-thaw cycles.
浓度	1 mg/ml (Please refer to the vial label for the specific concentration.)
偶联	Unconjugated
注意事项	仅供实验室使用。不适用于人类或动物的任何临床, 治疗或诊断用途。不适合动物或人类食用。



For full product information, images and publications, please visit our [website](#).

產品圖片

**GTX57230 FCM Image**

FACS analysis of HepG2 cells using GTX57230 PXR antibody.

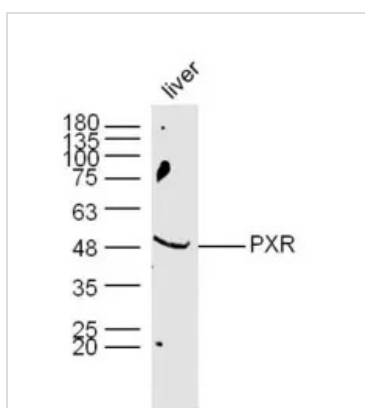
Green : Primary antibody

Orange : Isotype control antibody

Fixation : 4% PFA for 10min at room temperature

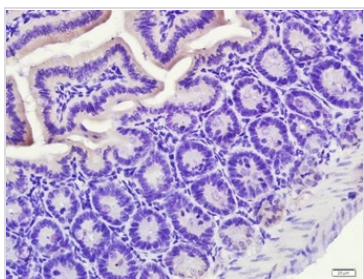
Permeabilization : 90% ice-cold methanol for 20 min at -20°C

Dilution : 1:500

**GTX57230 WB Image**

WB analysis of mouse liver tissue lysates using GTX57230 PXR antibody.

Dilution : 1:300

**GTX57230 IHC-P Image**

IHC-P analysis of mouse small intestine tissue using GTX57230 PXR antibody.

Antigen retrieval : Boiling in sodium citrate buffer (pH6.0) for 15min.

Dilution : 1:400



For full product information, images and publications, please visit our [website](#).