

CINP antibody [AT1G10]

Cat. No. GTX57694

宿主	Mouse
克隆	Monoclonal
同种型	IgG1
实验应用	WB
种属反应	Human

实验应用

应用说明

*最佳稀释倍数与浓度应由研究人员确认

Suggested dilution	Recommended dilution
WB	Assay dependent

以下为常规应用缩写的中文注解

WB: 免疫印迹

ICC/IF: 细胞染色

IHC-P: 石蜡切片

IHC-Fr: 冰冻切片

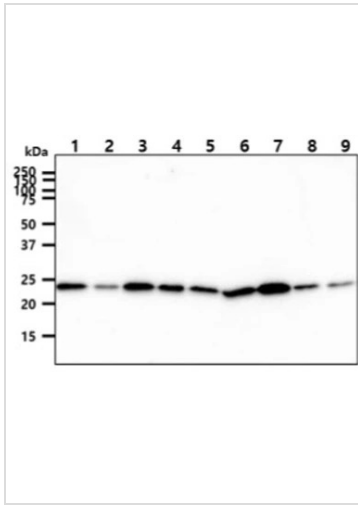
属性

形式	Liquid
存储溶液	PBS, 10% Glycerol
保存剂	0.02% Sodium azide
存放说明	Store as concentrated solution. Centrifuge briefly prior to opening vial. For short-term storage (1-2 weeks), store at 4°C. For long-term storage, aliquot and store at -20°C or below. Avoid multiple freeze-thaw cycles.
浓度	1 mg/ml (Please refer to the vial label for the specific concentration.)
偶联	Unconjugated
注意事项	仅供实验室使用。不适用于人类或动物的任何临床, 治疗或诊断用途。不适合动物或人类食用。



For full product information, images and publications, please visit our [website](#).

產品图片

**GTX57694 WB Image**

WB analysis of various samples using GTX57694 CINC antibody.

- Lane 1 : Jurkat whole cell lysate
 - Lane 2 : K562 whole cell lysate
 - Lane 3 : 293T whole cell lysate
 - Lane 4 : HepG2 whole cell lysate
 - Lane 5 : A549 whole cell lysate
 - Lane 6 : MCF-7 whole cell lysate
 - Lane 7 : LNCap whole cell lysate
 - Lane 8 : HeLa whole cell lysate
 - Lane 9 : SK-OV-3 whole cell lysate
- Loading : 40 μ g
Dilution : 1:1000



For full product information, images and publications, please visit our [website](#).