

NUCB2 antibody

Cat. No. GTX57754

宿主	Rabbit
克隆	Polyclonal
同种型	IgG
实验应用	WB
种属反应	Human, Mouse, Rat

实验应用

应用说明

*最佳稀释倍数与浓度应由研究人员确认

Suggested dilution	Recommended dilution
WB	Assay dependent

以下为常规应用缩写的中文注解

WB: 免疫印迹

ICC/IF: 细胞染色

IHC-P: 石蜡切片

IHC-Fr: 冰冻切片

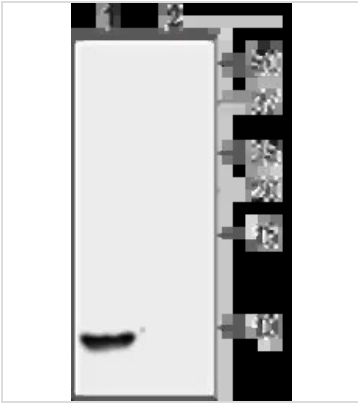
属性

形式	Liquid
存储溶液	PBS, 1% BSA
保存剂	0.05% Sodium azide
存放说明	Store as concentrated solution. Centrifuge briefly prior to opening vial. For short-term storage (1-2 weeks), store at 4°C. For long-term storage, aliquot and store at -20°C or below. Avoid multiple freeze-thaw cycles.
浓度	0.85 mg/ml (Please refer to the vial label for the specific concentration.)
偶联	Unconjugated
注意事项	仅供实验室使用。不适用于人类或动物的任何临床, 治疗或诊断用途。不适合动物或人类食用。



For full product information, images and publications, please visit our [website](#).

產品圖片

**GTX57754 WB Image**

WB analysis of human recombinant NUCB2 protein (200 ng) using GTX57754 NUCB2 antibody.

Lane 1 : Primary antibody

Lane 2 : Primary antibody preincubated with the control peptide antigen

Dilution : 1:200

**GTX57754 WB Image**

WB analysis of rat brain (Lanes 1 and 5), mouse brain (Lanes 2 and 6), rat pancreas (Lanes 3 and 7), and rat pituitary (Lanes 4 and 8) tissue lysates using GTX57754 NUCB2 antibody.

Lane 1-4 : Primary antibody

Lane 5-8 : Primary antibody preincubated with the control peptide antigen

Dilution : 1:200



For full product information, images and publications, please visit our [website](#).