

## SNAI1 antibody [6D2]

Cat. No. GTX60382

宿主	Mouse
克隆	Monoclonal
同种型	IgG1
实验应用	WB, ELISA
种属反应	Human

## 实验应用

## 应用说明

\*最佳稀释倍数与浓度应由研究人员确认

Suggested dilution	Recommended dilution
WB	1/500 - 1/2000
ELISA	1/10000

以下为常规应用缩写的中文注解

WB: 免疫印迹

ICC/IF: 细胞染色

IHC-P: 石蜡切片

IHC-Fr: 冰冻切片

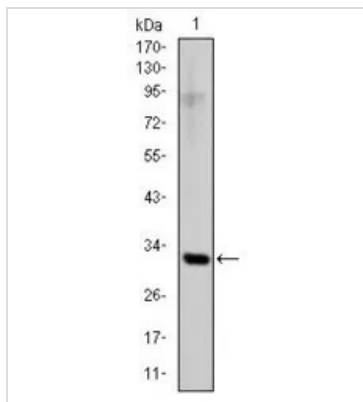
## 属性

形式	Liquid
存储溶液	Ascites
保存剂	0.03% Sodium azide
存放说明	Store as concentrated solution. Centrifuge briefly prior to opening vial. For short-term storage (1-2 weeks), store at 4°C. For long-term storage, aliquot and store at -20°C or below. Avoid multiple freeze-thaw cycles.
偶联	Unconjugated
注意事项	仅供实验室使用。不适用于人类或动物的任何临床、治疗或诊断用途。不适合动物或人类食用。



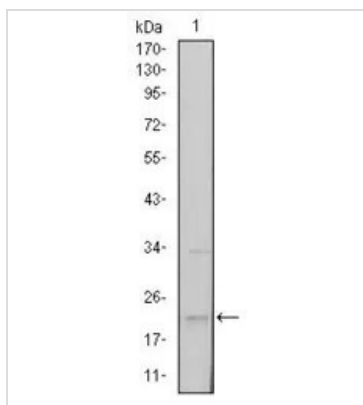
For full product information, images and publications, please visit our [website](#).

產品圖片



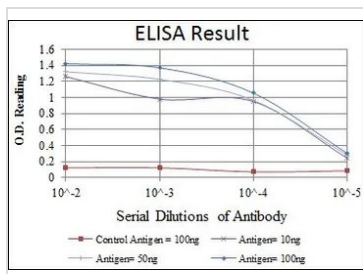
**GTX60382 WB Image**

WB analysis of human SNAI1 (AA: 2-264) recombinant protein using GTX60382 SNAI1 antibody [6D2].



**GTX60382 WB Image**

WB analysis of NTERA-2 cell lysate using GTX60382 SNAI1 antibody [6D2].



**GTX60382 ELISA Image**

ELISA analysis of antigen using GTX60382 SNAI1 antibody [6D2].

Red : Control antigen 100ng

Purple : Antigen 10ng

Green : Antigen 50ng

Blue : Antigen 100ng



For full product information, images and publications, please visit our [website](#).