

## DLGAP1 antibody [3G4]

**Cat. No. GTX60469**

宿主	Mouse
克隆	Monoclonal
同种型	IgG1
实验应用	WB, ICC/IF, IHC-P, ELISA
种属反应	Human, Mouse

## 实验应用

## 应用说明

\*最佳稀释倍数与浓度应由研究人员确认

Suggested dilution	Recommended dilution
WB	1/500 - 1/2000
ICC/IF	1/200 - 1/1000
IHC-P	1/200 - 1/1000
ELISA	1/10000

以下为常规应用缩写的中文注解

WB: 免疫印迹

ICC/IF: 细胞染色

IHC-P: 石蜡切片

IHC-Fr: 冰冻切片

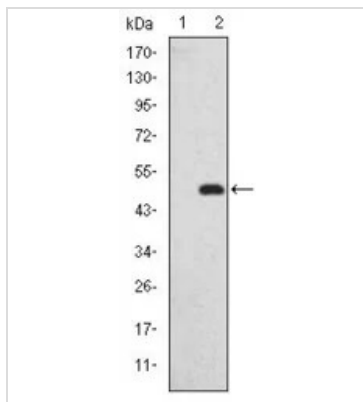
## 属性

形式	Liquid
存储溶液	Ascites
保存剂	0.03% Sodium azide
存放说明	Store as concentrated solution. Centrifuge briefly prior to opening vial. For short-term storage (1-2 weeks), store at 4°C. For long-term storage, aliquot and store at -20°C or below. Avoid multiple freeze-thaw cycles.
偶联	Unconjugated
注意事项	仅供实验室使用。不适用于人类或动物的任何临床, 治疗或诊断用途。不适合动物或人类食用。



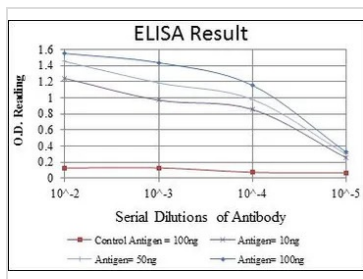
For full product information, images and publications, please visit our [website](#).

產品圖片



**GTX60469 WB Image**

WB analysis of HEK293 (1) and DLGAP1(AA: 490-663)-hlgGfc transfected HEK293 (2) cell lysate using GTX60469 DLGAP1 antibody [3G4].



**GTX60469 ELISA Image**

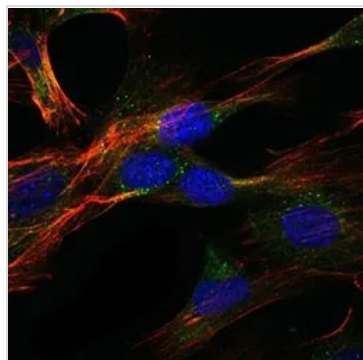
ELISA analysis of antigen using GTX60469 DLGAP1 antibody [3G4].

Red : Control antigen 100ng

Purple : Antigen 10ng

Green : Antigen 50ng

Blue : Antigen 100ng



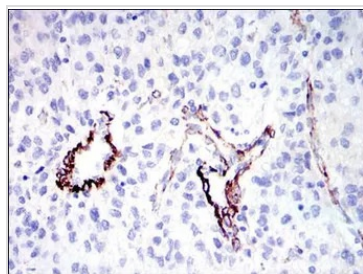
**GTX60469 ICC/IF Image**

ICC/IF analysis of NIH3T3 cells using GTX60469 DLGAP1 antibody [3G4].

Green : DLGAP1

Blue: DRAQ5 fluorescent DNA dye

Red: Actin filaments



**GTX60469 IHC-P Image**

IHC-P analysis of human liver cancer tissue using GTX60469 DLGAP1 antibody [3G4].



For full product information, images and publications, please visit our [website](#).