

Nucleostemin antibody [2C8D5]

Cat. No. GTX60706

宿主	Mouse
克隆	Monoclonal
同种型	IgG1
实验应用	WB, FCM, ELISA
种属反应	Human, Mouse

实验应用

应用说明

*最佳稀释倍数与浓度应由研究人员确认

Suggested dilution	Recommended dilution
WB	1/500 - 1/2000
FCM	1/200 - 1/400
ELISA	1/10000

以下为常规应用缩写的中文注解

WB: 免疫印迹

ICC/IF: 细胞染色

IHC-P: 石蜡切片

IHC-Fr: 冰冻切片

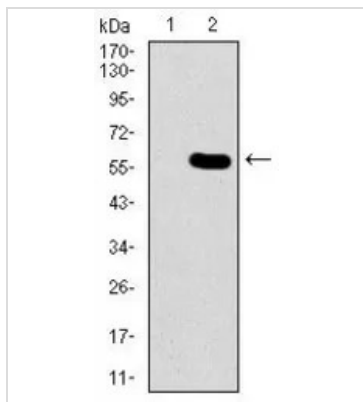
属性

形式	Liquid
存储溶液	PBS
保存剂	0.05% Sodium azide
存放说明	Store as concentrated solution. Centrifuge briefly prior to opening vial. For short-term storage (1-2 weeks), store at 4°C. For long-term storage, aliquot and store at -20°C or below. Avoid multiple freeze-thaw cycles.
浓度	1 mg/ml (Please refer to the vial label for the specific concentration.)
偶联	Unconjugated
注意事项	仅供实验室使用。不适用于人类或动物的任何临床, 治疗或诊断用途。不适合动物或人类食用。



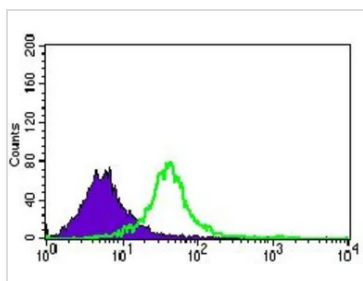
For full product information, images and publications, please visit our [website](#).

產品圖片



GTX60706 WB Image

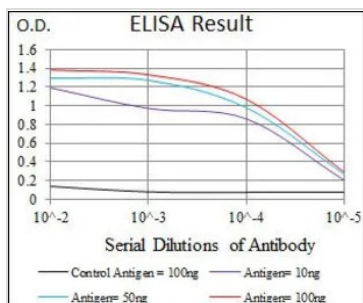
WB analysis of HEK293 (1) and Nucleostemin (AA: 1-226)-hlgGfC transfected HEK293 (2) cell lysate using GTX60706 Nucleostemin antibody [2C8D5].



GTX60706 FCM Image

FACS analysis of Jurkat cells using GTX60706 Nucleostemin antibody [2C8D5].

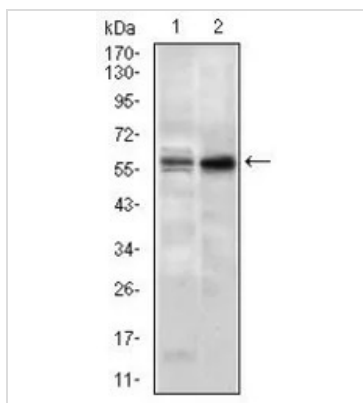
Green : Nucleostemin
Purple : negative control



GTX60706 ELISA Image

ELISA analysis of antigen using GTX60706 Nucleostemin antibody [2C8D5].

Black : Control antigen 100ng
Purple : Antigen 10ng
Blue : Antigen 50ng
Red : Antigen 100ng



GTX60706 WB Image

WB analysis of NIH3T3 (1) and PC-3 (2) cell lysate using GTX60706 Nucleostemin antibody [2C8D5].



For full product information, images and publications, please visit our [website](#).