

Histone H2A.Z (acetyl Lys4/Lys7/Lys11) antibody - ChIP grade

Cat. No. GTX60813

宿主	Rabbit
克隆	Polyclonal
同种型	IgG
实验应用	WB, ICC/IF, Dot, ELISA, ChIP assay, ChIP-seq
种属反应	Human, Mouse

引用文献 (1)

实验应用

应用说明

*最佳稀释倍数与浓度应由研究人员确认

Suggested dilution	Recommended dilution
WB	Assay dependent
ICC/IF	Assay dependent
Dot	Assay dependent
ELISA	Assay dependent
ChIP assay	Assay dependent
ChIP-seq	Assay dependent

以下为常规应用缩写的中文注解

WB: 免疫印迹

ICC/IF: 细胞染色

IHC-P: 石蜡切片

IHC-Fr: 冰冻切片

属性

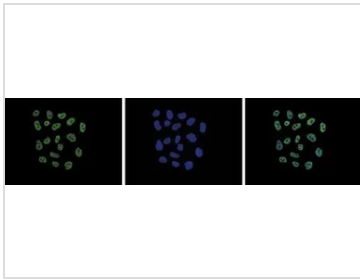
形式	Liquid
存储溶液	PBS
保存剂	0.05% Sodium azide, 0.05% ProClin 300
存放说明	Store as concentrated solution. Centrifuge briefly prior to opening vial. For short-term storage (1-2 weeks), store at 4°C. For long-term storage, aliquot and store at -20°C or below. Avoid multiple freeze-thaw cycles.
浓度	1.09 mg/ml (Please refer to the vial label for the specific concentration.)
偶联	Unconjugated
注意事项	仅供实验室使用。不适用于人类或动物的任何临床、治疗或诊断用途。不适合动物或人类食用。



For full product information, images and publications, please visit our [website](#).

Date 2026 / 05 / 10 Page 1 of 2

產品圖片



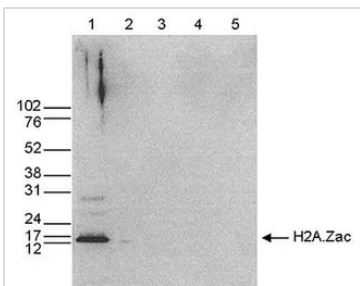
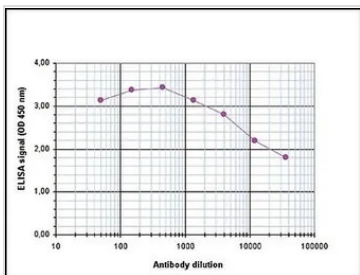
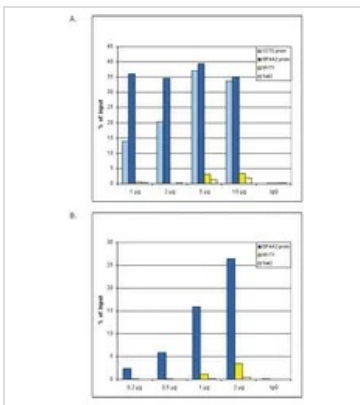
GTX60813 ICC/IF Image

ICC/IF analysis of 4% paraformaldehyde fixed HeLa cells using GTX60813 Histone H2A.Z (acetyl Lys4/Lys7/Lys11) antibody - ChIP grade.

Green : Primary antibody

Blue : DAPI

Dilution : 1:500



For full product information, images and publications, please visit our [website](#).