

## TIP-5 antibody - ChIP grade

Cat. No. GTX60851

宿主	Rabbit
克隆	Polyclonal
同种型	IgG
实验应用	WB, ChIP assay
种属反应	Human, Mouse

## 实验应用

## 应用说明

\*最佳稀释倍数与浓度应由研究人员确认

Suggested dilution	Recommended dilution
WB	1:1,000
ChIP assay	1-10 $\mu$ l

以下为常规应用缩写的中文注解

WB: 免疫印迹

ICC/IF: 细胞染色

IHC-P: 石蜡切片

IHC-Fr: 冰冻切片

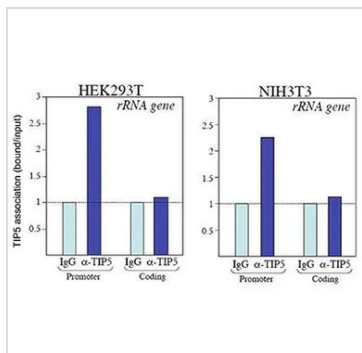
## 属性

形式	Liquid
存储溶液	Serum
保存剂	0.05% Sodium azide
存放说明	Store as concentrated solution. Centrifuge briefly prior to opening vial. For short-term storage (1-2 weeks), store at 4°C. For long-term storage, aliquot and store at -20°C or below. Avoid multiple freeze-thaw cycles.
偶联	Unconjugated
注意事项	仅供实验室使用。不适用于人类或动物的任何临床、治疗或诊断用途。不适合动物或人类食用。

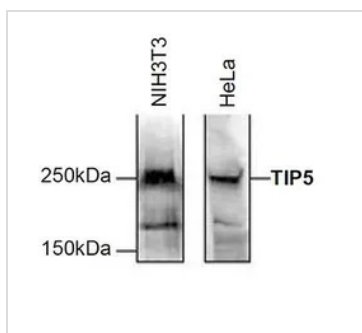


For full product information, images and publications, please visit our [website](#).

## 產品圖片

**GTX60851 ChIP assay Image**

ChIP analysis of HEK293T and NIH3T3 cells using GTX60851 TIP-5 antibody - ChIP grade. Chromatin from HEK293T and NIH3T3 cells was formaldehyde cross-linked and sheared with the Bioruptor to yield fragments with an average length of 200 to 400 bp. ChIP was performed overnight at 4°C with 100 µg sheared chromatin and either 5 µl of the TIP5 antibody or 5 µl IgG which was used as negative IP control. The IP'd DNA was analysed by qPCR with primer sets for the promoter and the coding region of the 28S ribosomal RNA gene. This figure shows the recovery by the TIP5 antibody and by IgG (set to 1), normalised to the input DNA. These results show that, both in HEK293T and in NIH3T3 cells, TIP5 is associated with the promoter, but not with the coding region of the 28srRNA gene.

**GTX60851 WB Image**

WB analysis of 150 µg nuclear extract from either NIH3T3 or HeLa cells using GTX60851 TIP-5 antibody - ChIP grade.

Dilution : 1:1,000



For full product information, images and publications, please visit our [website](#).