

Histone H4S1ph (phospho Ser1) antibody [RM194]

Cat. No. GTX60903

宿主	Rabbit
克隆	Monoclonal
同种型	IgG
实验应用	WB, ICC/IF, ELISA
种属反应	Human

实验应用

应用说明

*最佳稀释倍数与浓度应由研究人员确认

Suggested dilution	Recommended dilution
WB	0.5 µg/mL - 2 µg/mL
ICC/IF	1 µg/mL - 2 µg/mL
ELISA	0.2 µg/mL - 1 µg/mL

以下为常规应用缩写的中文注解

WB: 免疫印迹

ICC/IF: 细胞染色

IHC-P: 石蜡切片

IHC-Fr: 冰冻切片

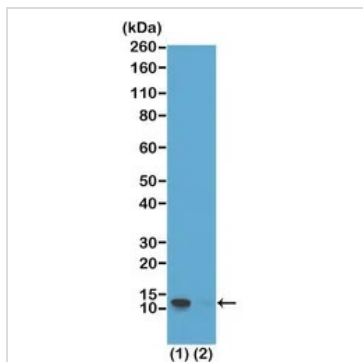
属性

形式	Liquid
存储溶液	PBS, 1% BSA, 50% Glycerol
保存剂	0.09% Sodium azide
存放说明	Store as concentrated solution. Centrifuge briefly prior to opening vial. For short-term storage (1-2 weeks), store at 4°C. For long-term storage, aliquot and store at -20°C or below. Avoid multiple freeze-thaw cycles.
浓度	Batch dependent (Please refer to the vial label for the specific concentration.)
偶联	Unconjugated
注意事项	仅供实验室使用。不适用于人类或动物的任何临床, 治疗或诊断用途。不适合动物或人类食用。



For full product information, images and publications, please visit our [website](#).

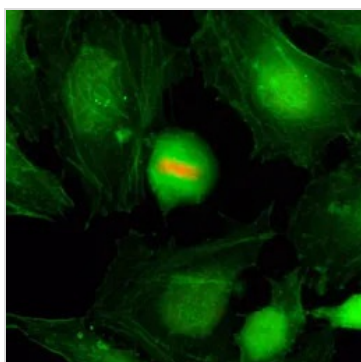
產品圖片



GTX60903 WB Image

WB analysis of extracts of HeLa cells (Lane 1) and recombinant Histone H4 protein (Lane 2) using GTX60903 Histone H4S1ph (phospho Ser1) antibody [RM194].

Dilution : 1µg/ml

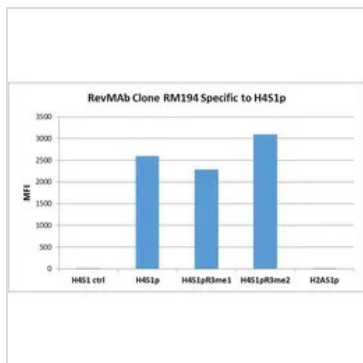


GTX60903 ICC/IF Image

ICC/IF analysis of HeLa cells using GTX60903 Histone H4S1ph (phospho Ser1) antibody [RM194].

Red : Primary antibody

Green : Actin



GTX60903 Image

The GTX60903 reacts to Histone H4 phosphorylated at Serine 1 (H4S1p). The reactivity is not affected by neighboring Arginine 3 modifications (H4S1pR3me1 and H4S1pR3me2). No cross reactivity with Histone H2A phosphorylated at Serine 1 (H2AS1p).



For full product information, images and publications, please visit our [website](#).