

## Histone H3 antibody [RM186]

Cat. No. GTX60910

宿主	Rabbit
克隆	Monoclonal
同种型	IgG
实验应用	WB, ICC/IF, ELISA
种属反应	Human

## 实验应用

## 应用说明

\*最佳稀释倍数与浓度应由研究人员确认

Suggested dilution	Recommended dilution
WB	1 µg/mL - 2 µg/mL
ICC/IF	0.5 µg/mL - 2 µg/mL
ELISA	0.5 µg/mL - 1 µg/mL

以下为常规应用缩写的中文注解

WB: 免疫印迹

ICC/IF: 细胞染色

IHC-P: 石蜡切片

IHC-Fr: 冰冻切片

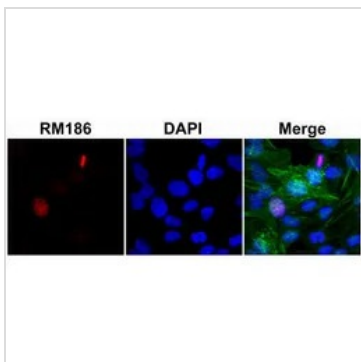
## 属性

形式	Liquid
存储溶液	PBS, 1% BSA, 50% Glycerol
保存剂	0.09% Sodium azide
存放说明	Store as concentrated solution. Centrifuge briefly prior to opening vial. For short-term storage (1-2 weeks), store at 4°C. For long-term storage, aliquot and store at -20°C or below. Avoid multiple freeze-thaw cycles.
浓度	Batch dependent (Please refer to the vial label for the specific concentration.)
偶联	Unconjugated
注意事项	仅供实验室使用。不适用于人类或动物的任何临床, 治疗或诊断用途。不适合动物或人类食用。



For full product information, images and publications, please visit our [website](#).

產品圖片

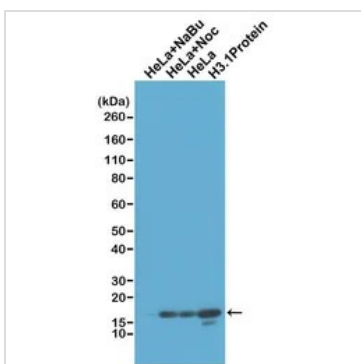


**GTX60910 ICC/IF Image**

ICC/IF analysis of HeLa cells treated with sodium butyrate using GTX60910 Histone H3 antibody [RM186].

Red : Primary antibody

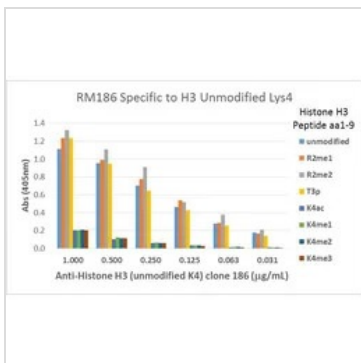
Green : Actin



**GTX60910 WB Image**

WB analysis of acid extracts of HeLa cells treated with sodium butyrate (HeLa+NaBu), treated with Nocodazole (HeLa+Noc), or non-treated and recombinant histone H3.1 protein using GTX60910 Histone H3 antibody [RM186].

Dilution : 1µg/ml



**GTX60910 Image**

The GTX60910 recognizes Histone H3 unmodified at Lys4 and does not recognize acetylated, mono-methylated, dimethylated, or trimethylated Lys4. The antibody binding specificity allows for modifications of Arg2 or Thr3 in histone H3.



For full product information, images and publications, please visit our [website](#).