

Goat Anti-Mouse IgG (Fab) antibody [RMG05]

Cat. No. GTX60923

宿主	Goat
克隆	Monoclonal
同种型	IgG
实验应用	WB, FCM, IP, ELISA
种属反应	Mouse

Package
100 µg

实验应用

应用说明

*最佳稀释倍数与浓度应由研究人员确认

Suggested dilution	Recommended dilution
WB	Assay dependent
FCM	Assay dependent
IP	Assay dependent
ELISA	0.05µg/mL - 1µg/mL

以下为常规应用缩写的中文注解

WB: 免疫印迹

ICC/IF: 细胞染色

IHC-P: 石蜡切片

IHC-Fr: 冰冻切片

产品说明

This antibody reacts to the Fab region of Mouse IgG, including IgG1, IgG2a, IgG2b, and IgG3. No cross reactivity with IgM, IgA, IgE, human IgG, rat IgG, or rabbit IgG.

属性

形式	Liquid
存储溶液	PBS, 1% BSA, 50% Glycerol
保存剂	0.09% Sodium azide
存放说明	Store as concentrated solution. Centrifuge briefly prior to opening vial. For short-term storage (1-2 weeks), store at 4°C. For long-term storage, aliquot and store at -20°C or below. Avoid multiple freeze-thaw cycles.
浓度	Batch dependent (Please refer to the vial label for the specific concentration.)
免疫原	Mouse IgG
纯化方式	Protein G purified From tissue culture supernatant
偶联	Unconjugated

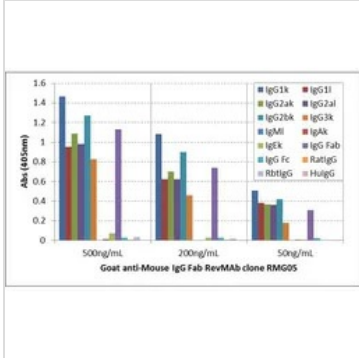


For full product information, images and publications, please visit our [website](#).

注意事项

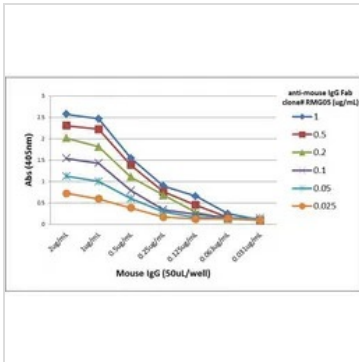
仅供实验室使用。不适用于人类或动物的任何临床，治疗或诊断用途。不适合动物或人类食用。

產品图片



GTX60923 ELISA Image

ELISA analysis of mouse immunoglobulins (50 ng/well) using GTX60923 Goat Anti-Mouse IgG (Fab) antibody [RMG05]. No cross reactivity with IgM, IgA, IgE, human IgG, rat IgG, and rabbit IgG. Dilution : 500 ng/mL, 200 ng/mL, or 50 ng/mL of RMG05 was used as the primary antibody.



GTX60923 ELISA Image

ELISA analysis of different amount of immunogen proteins using serial diluted GTX60923 Goat Anti-Mouse IgG (Fab) antibody [RMG05].



For full product information, images and publications, please visit our [website](#).