

## Rad17 (phospho Ser645) antibody [EP1519Y]

## Cat. No. GTX61991

宿主	Rabbit
克隆	Monoclonal
同种型	IgG
实验应用	WB
种属反应	Human

## 实验应用

## 应用说明

**Recommended Starting Dilutions:**

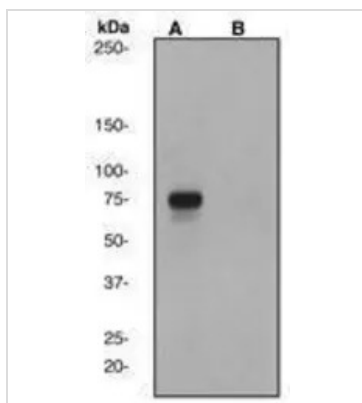
For WB: Use at a dilution of 1:2500 - 5000

Optimal working dilution for a specific application should be determined by the investigator.

## 属性

形式	Liquid
存储溶液	50mM Tris-Glycine, 150mM NaCl, 0.05% BSA, 40% Glycerol
保存剂	0.01% Sodium azide
存放说明	Store as concentrated solution. Centrifuge briefly prior to opening vial. For short-term storage (1-2 weeks), store at 4°C. For long-term storage, aliquot and store at -20°C or below. Avoid multiple freeze-thaw cycles.
偶联	Unconjugated
注意事项	For <i>In vitro</i> laboratory use only. Not for any clinical, therapeutic, or diagnostic use in humans or animals. Not for animal or human consumption. RabMAb® technology is covered by the following U.S. Patents, No. 5,675,063 and/or 7,429,488.

## 产品图片



## GTX61991 WB Image

A. Western blot analysis on HeLa cell lysates using anti-Rad17 phospho (pS645) RabMAb (cat. #GTX61991) 1:5000 dilution. Cells were either (A) untreated (B) treated with Lambda Phosphatase.



For full product information, images and publications, please visit our [website](#).