

RIAM antibody [EPR2806]

Cat. No. GTX62255

宿主	Rabbit
克隆	Monoclonal
同种型	IgG
实验应用	WB, ICC/IF, IHC-P, IP
种属反应	Human, Mouse

实验应用

应用说明

Recommended Starting Dilutions:

For WB: Use at a dilution of 1:2000 - 10,000

For IHC: Use at a dilution of 1:100 - 250

For ICC: Use at a dilution of 1:100 - 250

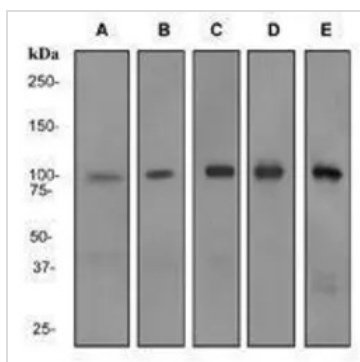
For IP: Use at a dilution of 1:50

Optimal working dilution for a specific application should be determined by the investigator.

属性

形式	Liquid
存储溶液	50mM Tris-Glycine, 150mM NaCl, 0.05% BSA, 40% Glycerol
保存剂	0.01% Sodium azide
存放说明	Store as concentrated solution. Centrifuge briefly prior to opening vial. For short-term storage (1-2 weeks), store at 4°C. For long-term storage, aliquot and store at -20°C or below. Avoid multiple freeze-thaw cycles.
偶联	Unconjugated
注意事项	仅供实验室使用。不适用于人类或动物的任何临床、治疗或诊断用途。不适合动物或人类食用。

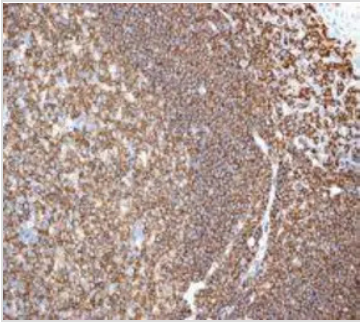
产品图片

**GTX62255 WB Image**

Western blot analysis on (A) Human Lymph node (B) Fetal brain (C) human spleen (D) Jurkat and (E) HL-60 + retinoic acid cell lysates using anti-RIAM RabMAb (cat. #GTX62255).



For full product information, images and publications, please visit our [website](#).

**GTX62255 IHC-P Image**

Immunohistochemical analysis of paraffin-embedded human tonsil tissue using anti-RIAM RabMAb (cat. #GTX62255-1).



For full product information, images and publications, please visit our [website](#).