

ING4 antibody [EP3804]

Cat. No. GTX62655

宿主	Rabbit
克隆	Monoclonal
同种型	IgG
实验应用	WB, IP
种属反应	Human, Mouse, Rat

引用文献 (2)

实验应用

应用说明

Recommended Starting Dilutions:

For WB: Use at a dilution of 1:1,000 - 10,000

For IP: Use at a dilution of 1:10 - 100

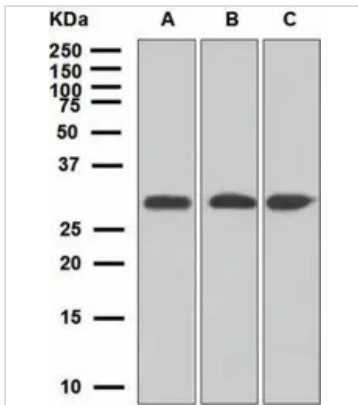
Optimal working dilution for a specific application should be determined by the investigator.

属性

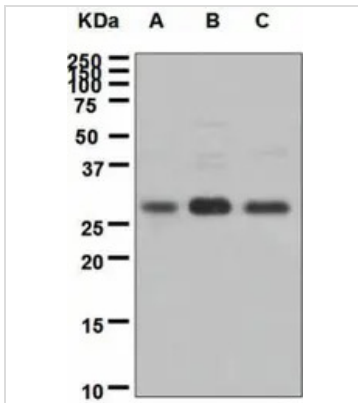
形式	Liquid
存储溶液	50mM Tris-Glycine, 150mM NaCl, 0.05% BSA, 40% Glycerol
保存剂	0.01% Sodium azide
存放说明	Store as concentrated solution. Centrifuge briefly prior to opening vial. For short-term storage (1-2 weeks), store at 4°C. For long-term storage, aliquot and store at -20°C or below. Avoid multiple freeze-thaw cycles.
偶联	Unconjugated
RRID	AB_10620397
注意事项	For <i>In vitro</i> laboratory use only. Not for any clinical, therapeutic, or diagnostic use in humans or animals. Not for animal or human consumption. RabMAb® technology is covered by the following U.S. Patents, No. 5,675,063 and/or 7,429,488.



For full product information, images and publications, please visit our [website](#).

產品圖片

GTX62655 WB Image

Western blot analysis on (A) 293T (B) T47-D and (C) Jurkat cell lysates using anti-ING4 RabMAb (cat. #GTX62655).


GTX62655 WB Image

Western blot analysis on (A) C6 (B) Raw264.7 and (C) PC-12 cell lysates using anti-ING4 RabMAb (cat. #GTX62655).



For full product information, images and publications, please visit our [website](#).