

## ZWINT antibody [GT276]

Cat. No. GTX628915

宿主	Mouse
克隆	Monoclonal
同种型	IgG2a
实验应用	WB
种属反应	Human

## 实验应用

## 应用说明

\*最佳稀释倍数与浓度应由研究人员确认

Suggested dilution	Recommended dilution
WB	1:500-1:3000

以下为常规应用缩写的中文注解

WB: 免疫印迹

ICC/IF: 细胞染色

IHC-P: 石蜡切片

IHC-Fr: 冰冻切片

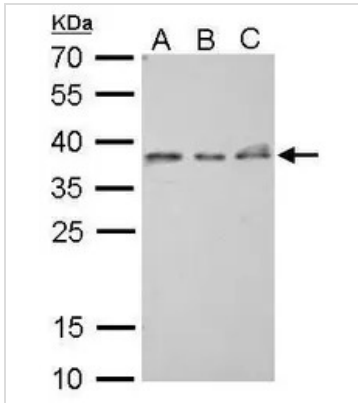
## 属性

形式	Liquid
存储溶液	PBS
保存剂	No preservatives
存放说明	Store as concentrated solution. Centrifuge briefly prior to opening vial. For short-term storage (1-2 weeks), store at 4°C. For long-term storage, aliquot and store at -20°C or below. Avoid multiple freeze-thaw cycles.
浓度	1 mg/ml (Please refer to the vial label for the specific concentration.)
偶联	Unconjugated
RRID	AB_2888082
注意事项	仅供实验室使用。不适用于人类或动物的任何临床，治疗或诊断用途。不适合动物或人类食用。



For full product information, images and publications, please visit our [website](#).

## 產品圖片

**GTX628915 WB Image**

ZWINT antibody [GT276] detects ZWINT protein by Western blot analysis.

A. 30 µg 293T whole cell lysate/extract

B. 30 µg A431 whole cell lysate/extract

C. 30 µg HeLa whole cell lysate/extract

12 % SDS-PAGE

ZWINT antibody [GT276] (GTX628915) dilution: 1:500



For full product information, images and publications, please visit our [website](#).