

Dengue virus NS3 protein antibody [GT2811]

Cat. No. GTX629477

宿主	Mouse
克隆	Monoclonal
同种型	IgG1
实验应用	WB, ICC/IF, ELISA
种属反应	Dengue virus 1, Dengue virus 2, Dengue virus 3, Dengue virus 4

引用文献 (29)

★★★★★ 产品评论 (3)

实验应用

应用说明

*最佳稀释倍数与浓度应由研究人员确认

Suggested dilution	Recommended dilution
WB	1:1000-1:10000
ICC/IF	1:100-1:2000
ELISA	Assay dependent

以下为常规应用缩写的中文注解

WB: 免疫印迹

ICC/IF: 细胞染色

IHC-P: 石蜡切片

IHC-Fr: 冰冻切片

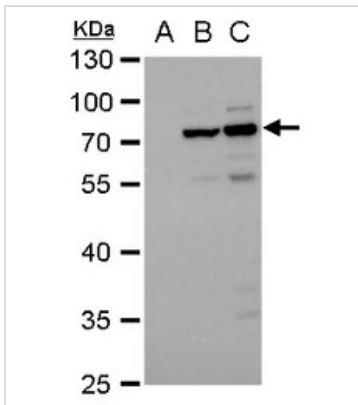
属性

形式	Liquid
存储溶液	PBS, 20% Glycerol
保存剂	No preservatives
存放说明	Store as concentrated solution. Centrifuge briefly prior to opening vial. For short-term storage (1-2 weeks), store at 4°C. For long-term storage, aliquot and store at -20°C or below. Avoid multiple freeze-thaw cycles.
浓度	1 mg/ml (Please refer to the vial label for the specific concentration.)
偶联	Unconjugated
RRID	AB_2801283
注意事项	仅供实验室使用。不适用于人类或动物的任何临床, 治疗或诊断用途。不适合动物或人类食用。



For full product information, images and publications, please visit our [website](#).

產品圖片

**GTX629477 WB Image**

NS3 (Dengue virus) antibody [GT2811] detects NS3 (Dengue virus) protein by western blot analysis.

A. 66 µg BHK-21 whole cell extract

B. 20 µg whole cell extract of Dengue virus type 2 infected BHK-21 cells

C. 10 µg whole cell extract of Dengue virus type 3 infected BHK-21 cells

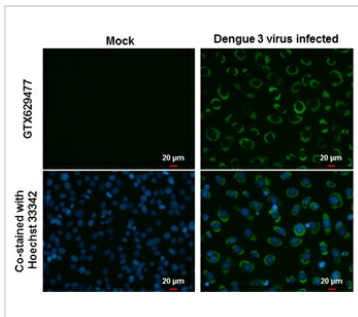
10% SDS-PAGE

NS3 (Dengue virus) antibody [GT2811] (GTX629477) dilution: 1:5000

The HRP-conjugated anti-mouse IgG antibody (GTX213111-01) was used to detect the primary antibody.

The results may vary from different DENV strains, viral infection status, and culture conditions.

Reference: [Proc Natl Acad Sci U S A. 2013 Apr 23;110\(17\):6795-9](#), [J Infect Dis. 2011 Jun 15;203\(12\):1775-83](#).

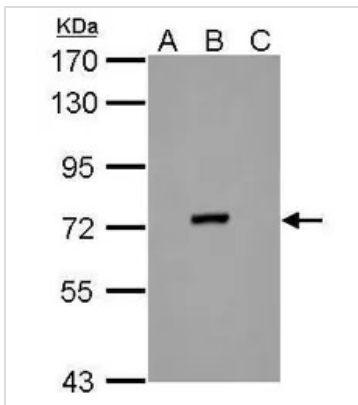
**GTX629477 ICC/IF Image**

NS3 (Dengue virus) antibody [GT2811] detects NS3 (Dengue virus) protein at cytoplasm by immunofluorescent analysis.

Samples: BHK-21 cells mock (left) and infected with Dengue virus 3 (right) were fixed in paraformaldehyde.

Green: NS3 (Dengue virus) protein stained by NS3 (Dengue virus) antibody [GT2811] (GTX629477) diluted at 1:2000.

Blue: Hoechst 33342 staining.

**GTX629477 WB Image**

NS3 (Dengue Virus 2) antibody [GT2811] detects NS3 protein by western blot analysis.

A. 30 µg BHK21 whole cell lysate/extract

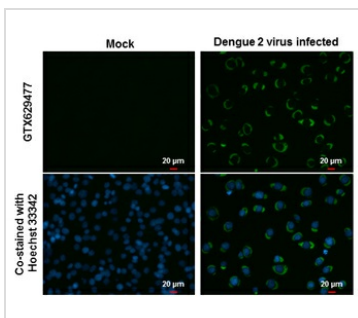
B. 30 µg whole cell lysate/extract of Dengue virus 2 infected BHK21 cells

C. 30 µg whole cell lysate/extract of Japanese encephalitis virus infected BHK21 cells

7.5% SDS-PAGE

NS3 (Dengue Virus 2) antibody [GT2811] (GTX629477) dilution: 1:5000

The HRP-conjugated anti-mouse IgG antibody (GTX213111-01) was used to detect the primary antibody.

**GTX629477 ICC/IF Image**

NS3 (Dengue virus) antibody [GT2811] detects NS3 (Dengue virus) protein at cytoplasm by immunofluorescent analysis.

Samples: BHK-21 cells mock (left) and infected with Dengue virus 2 (right) were fixed in paraformaldehyde.

Green: NS3 (Dengue virus) protein stained by NS3 (Dengue virus) antibody [GT2811] (GTX629477) diluted at 1:2000.

Blue: Hoechst 33342 staining.



For full product information, images and publications, please visit our [website](#).