

SLU7 antibody [GT759]

Cat. No. GTX630653

宿主	Mouse
克隆	Monoclonal
同种型	IgG1
实验应用	WB
种属反应	Human

实验应用

应用说明

*最佳稀释倍数与浓度应由研究人员确认

Suggested dilution	Recommended dilution
WB	1:1000-1:10000

以下为常规应用缩写的中文注解

WB: 免疫印迹

ICC/IF: 细胞染色

IHC-P: 石蜡切片

IHC-Fr: 冰冻切片

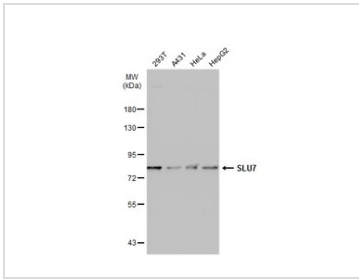
属性

形式	Liquid
存储溶液	PBS
保存剂	No preservatives
存放说明	Store as concentrated solution. Centrifuge briefly prior to opening vial. For short-term storage (1-2 weeks), store at 4°C. For long-term storage, aliquot and store at -20°C or below. Avoid multiple freeze-thaw cycles.
浓度	1 mg/ml (Please refer to the vial label for the specific concentration.)
偶联	Unconjugated
RRID	AB_2888229
注意事项	仅供实验室使用。不适用于人类或动物的任何临床，治疗或诊断用途。不适合动物或人类食用。



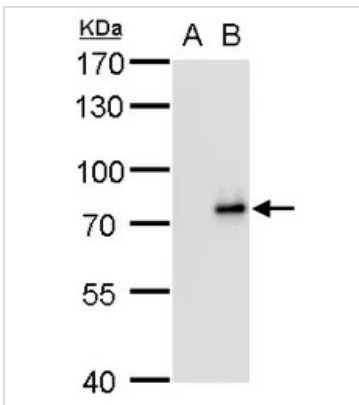
For full product information, images and publications, please visit our [website](#).

產品图片



GTX630653 WB Image

Various whole cell extracts (30 µg) were separated by 7.5% SDS-PAGE, and the membrane was blotted with SLU7 antibody (GTX630653) diluted at 1:1000. The HRP-conjugated anti-mouse IgG antibody (GTX213111-01) was used to detect the primary antibody, and the signal was developed with Trident ECL plus-Enhanced.



GTX630653 WB Image

SLU7 antibody [GT759] detects SLU7 protein by western blot analysis.

A. 30 µg 293T whole cell lysate/extract

B. 30 µg whole cell lysate/extract of human SLU7-transfected 293T cells

7.5 % SDS-PAGE

SLU7 antibody [GT759] (GTX630653) dilution: 1:5000



For full product information, images and publications, please visit our [website](#).