

CEP152 antibody [GT1315]

Cat. No. GTX630984

宿主	Mouse
克隆	Monoclonal
同种型	IgG1
实验应用	WB, ICC/IF
种属反应	Human

引用文献 (1)

实验应用

应用说明

*最佳稀释倍数与浓度应由研究人员确认

Suggested dilution	Recommended dilution
WB	1:500-1:3000
ICC/IF	Assay dependent

以下为常规应用缩写的中文注解

WB: 免疫印迹

ICC/IF: 细胞染色

IHC-P: 石蜡切片

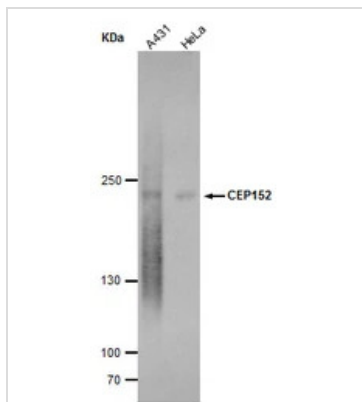
IHC-Fr: 冰冻切片

属性

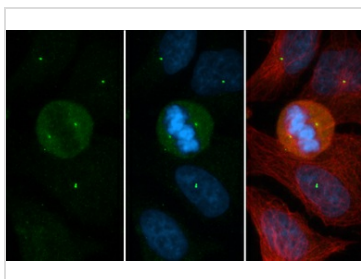
形式	Liquid
存储溶液	PBS
保存剂	No preservatives
存放说明	Store as concentrated solution. Centrifuge briefly prior to opening vial. For short-term storage (1-2 weeks), store at 4°C. For long-term storage, aliquot and store at -20°C or below. Avoid multiple freeze-thaw cycles.
浓度	1 mg/ml (Please refer to the vial label for the specific concentration.)
偶联	Unconjugated
RRID	AB_2888236
注意事项	仅供实验室使用。不适用于人类或动物的任何临床, 治疗或诊断用途。不适合动物或人类食用。

For full product information, images and publications, please visit our [website](#).

產品圖片

**GTX630984 WB Image**

CEP152 antibody [GT1315] detects CEP152 protein by western blot analysis. Various whole cell extracts (30 μ g) were separated by 5 % SDS-PAGE, and blotted with CEP152 antibody [GT1315] (GTX630984) diluted by 1:500, and developed with Trident femto Western HRP Substrate (GTX14698).

**GTX630984 ICC/IF Image**

CEP152 antibody [GT1315] detects CEP152 protein at centrosome by immunofluorescent analysis.

Sample: HeLa cells were fixed in 4% PFA.

Green: CEP152 stained by CEP152 antibody [GT1315] (GTX630984) diluted at 1:500.

Red: beta Tubulin, a cytoskeleton marker, stained by beta Tubulin antibody (GTX101279) diluted at 1:1000.

Blue: Fluoroshield with DAPI (GTX30920).



For full product information, images and publications, please visit our [website](#).