

TOM1L1 antibody [3F12]

Cat. No. GTX632246

宿主	Mouse
克隆	Monoclonal
同种型	IgG1
实验应用	WB, ICC/IF
种属反应	Human

实验应用

应用说明

*最佳稀释倍数与浓度应由研究人员确认

Suggested dilution	Recommended dilution
WB	1:500-1:3000
ICC/IF	Assay dependent

以下为常规应用缩写的中文注解

WB: 免疫印迹

ICC/IF: 细胞染色

IHC-P: 石蜡切片

IHC-Fr: 冰冻切片

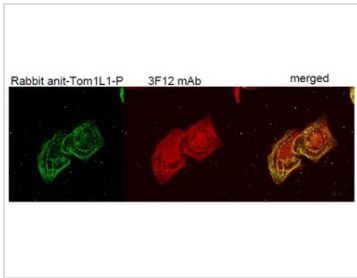
属性

形式	Liquid
存储溶液	PBS
保存剂	No preservatives
存放说明	Store as concentrated solution. Centrifuge briefly prior to opening vial. For short-term storage (1-2 weeks), store at 4°C. For long-term storage, aliquot and store at -20°C or below. Avoid multiple freeze-thaw cycles.
浓度	2.34 mg/ml (Please refer to the vial label for the specific concentration.)
偶联	Unconjugated
RRID	AB_2888299
注意事项	仅供实验室使用。不适用于人类或动物的任何临床, 治疗或诊断用途。不适合动物或人类食用。



For full product information, images and publications, please visit our [website](#).

產品圖片

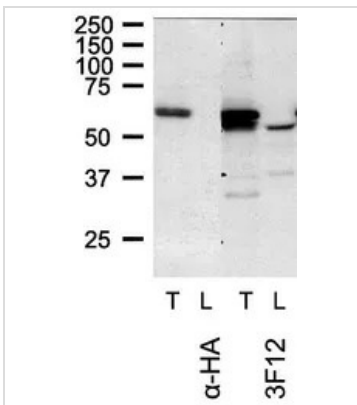
**GTX632246 ICC/IF Image**

ICC/IF analysis of EGF stimulated A431 cells using GTX632246 TOM1L1 antibody [3F12].

Red : Primary antibody

Green : Polyclonal TOM1L1 antibody

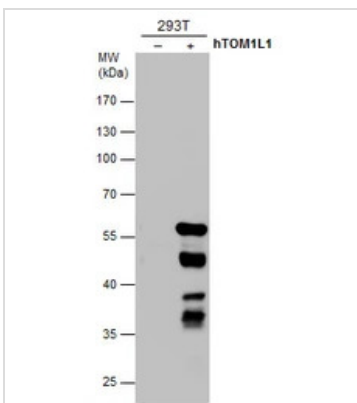
Yellow : Merged color of red and green

**GTX632246 WB Image**

WB analysis of HeLa lysate transfected with TOM1L1 using GTX632246 TOM1L1 antibody [3F12].

T : Transfected HeLa with HA-TOM1L1 fl

L : HeLa lysate

**GTX632246 WB Image**

TOM1L1 antibody detects TOM1L1 protein by western blot analysis. Non-transfected (-) and TOM1L1-transfected (+) 293T whole cell extracts (30 µg) were separated by 10% SDS-PAGE, and the membrane was blotted with TOM1L1 antibody (GTX632246) diluted at 1:1000.



For full product information, images and publications, please visit our [website](#).