

Hepatitis D virus Large delta + Small delta protein antibody [HL1055]

Cat. No. GTX636030

宿主	Rabbit
克隆	Monoclonal
同种型	IgG
实验应用	WB, ICC/IF
种属反应	Hepatitis D virus

实验应用

应用说明

*最佳稀释倍数与浓度应由研究人员确认

Suggested dilution	Recommended dilution
WB	Assay dependent
ICC/IF	Assay dependent

以下为常规应用缩写的中文注解

WB: 免疫印迹

ICC/IF: 细胞染色

IHC-P: 石蜡切片

IHC-Fr: 冰冻切片

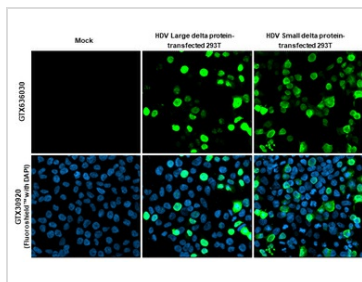
属性

形式	Liquid
存储溶液	PBS
保存剂	No preservatives
存放说明	Store as concentrated solution. Centrifuge briefly prior to opening vial. For short-term storage (1-2 weeks), store at 4°C. For long-term storage, aliquot and store at -20°C or below. Avoid multiple freeze-thaw cycles.
浓度	1 mg/ml (Please refer to the vial label for the specific concentration.)
偶联	Unconjugated
RRID	AB_2909936
注意事项	仅供实验室使用。不适用于人类或动物的任何临床, 治疗或诊断用途。不适合动物或人类食用。



For full product information, images and publications, please visit our [website](#).

產品圖片



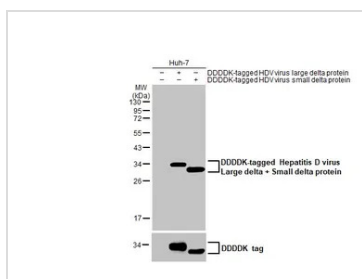
GTX636030 ICC/IF Image

Hepatitis D virus Large delta + Small delta protein antibody [HL1055] detects Hepatitis D virus Large delta + Small delta protein protein by immunofluorescent analysis.

Sample: Mock and transfected 293T cells were fixed in 4% paraformaldehyde at RT for 15 min.

Green: Hepatitis D virus Large delta + Small delta protein stained by Hepatitis D virus Large delta + Small delta protein antibody [HL1055] (GTX636030) diluted at 1:500.

Blue: Fluoroshield with DAPI (GTX30920).



GTX636030 WB Image

Non-transfected (-) and transfected (+) Huh-7 whole cell extracts (30 µg) were separated by 12% SDS-PAGE, and the membrane was blotted with Hepatitis D virus Large data + Small delta protein antibody [HL1055] (GTX636030) diluted at 1:5000. The HRP-conjugated anti-rabbit IgG antibody (GTX213110-01) was used to detect the primary antibody.



For full product information, images and publications, please visit our [website](#).