

## Influenza A virus Nucleoprotein antibody [HL1089]

Cat. No. GTX636247

宿主	Rabbit
克隆	Monoclonal
同种型	IgG
实验应用	WB, ICC/IF, ELISA, Lateral Flow, Sandwich ELISA, IHC-P (cell pellet)
种属反应	Influenza A virus

引用文献 (12)

★★★★★ 产品评论 (2)

## 实验应用

## 应用说明

\*最佳稀释倍数与浓度应由研究人员确认

Suggested dilution	Recommended dilution
WB	Assay dependent
ICC/IF	Assay dependent
ELISA	Assay dependent
Lateral Flow	Assay dependent
Sandwich ELISA	Assay dependent
IHC-P (cell pellet)	Assay dependent

**Note : Capture : GTX637790, Detection : GTX636247 or Capture : GTX636247 / GTX636318, Detection : GTX636199 or Capture : GTX636247 / GTX636199, Detection : GTX636318. Please notice that GTX636247 needs to be conjugated to Gold to function as the detection antibody when paired with GTX637790. Please contact us for custom Gold-conjugated antibody.**

**Capture : GTX636247, Detection : GTX636318 / GTX629633 or Capture : GTX636318, Detection : GTX636247.**

**Please notice that the detected antibody needs to be conjugated to HRP to function as the detection antibody when paired with the capture antibody.**

**Please contact us for custom HRP-conjugated antibody.**

以下为常规应用缩写的中文注解

WB: 免疫印迹

ICC/IF: 细胞染色

IHC-P: 石蜡切片

IHC-Fr: 冰冻切片

## 属性

形式	Liquid
存储溶液	PBS
保存剂	No preservatives
存放说明	Store as concentrated solution. Centrifuge briefly prior to opening vial. For short-term storage (1-2 weeks), store at 4°C. For long-term storage, aliquot and store at -20°C or below. Avoid multiple freeze-thaw cycles.



For full product information, images and publications, please visit our [website](#).

Date 2026 / 04 / 04 Page 1 of 2

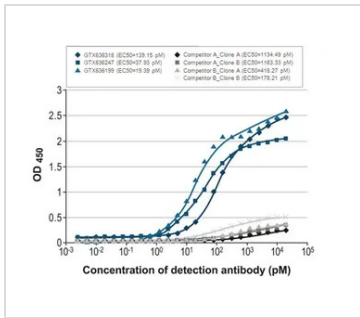
**浓度** 1 mg/ml (Please refer to the vial label for the specific concentration.)

**偶联** Unconjugated

**RRID** AB\_2909956

**注意事项** 仅供实验室使用。不适用于人类或动物的任何临床、治疗或诊断用途。不适合动物或人类食用。

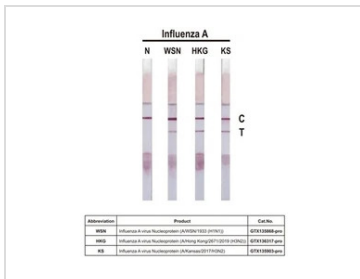
產品图片



**GTX636247 ELISA Image**

Indirect ELISA analysis was performed by coating a plate with recombinant influenza A virus nucleoprotein (A/Kansas/2017/H3N2), DDDDK Tag (GTX135903-pro) (50 ng), and probing with the specified influenza A virus nucleoprotein antibodies at the indicated concentrations. Goat anti-rabbit IgG antibody (HRP) (GTX213110-01) (1:10000) or goat anti-mouse IgG antibody (HRP) (GTX213111-01) (1:10000) were used to detect the bound primary antibodies.

\*The competitor is not affiliated with GeneTex and does not endorse this product.

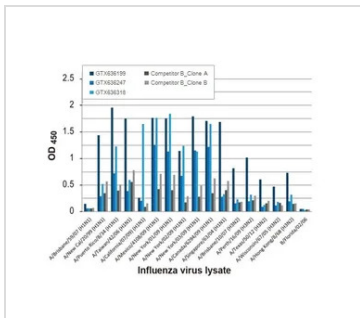


**GTX636247 Lateral Flow Image**

Detection of recombinant influenza A virus nucleoproteins of the indicated strains by lateral flow assay using the recombinant rabbit monoclonal antibody pair.

**Capture:** Influenza A virus Nucleoprotein antibody [HL1089] (GTX636247)

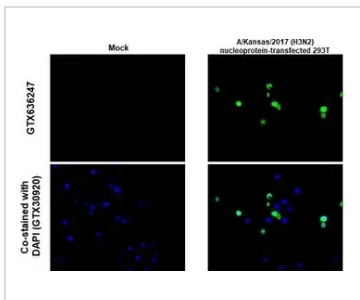
**Detection:** Influenza A virus Nucleoprotein antibody [HL1103] (GTX636318)



**GTX636247 ELISA Image**

Indirect ELISA analysis was performed by coating a plate with viral lysates (1 µg) derived from different strains of influenza A virus or influenza B virus and probing with the specified influenza A virus nucleoprotein antibodies (1 µg/ml). Goat anti-rabbit IgG antibody (HRP) (GTX213110-01) (1:10000) or goat anti-mouse IgG antibody (HRP) (GTX213111-01) (1:10000) were used to detect the bound primary antibodies.

\*The competitor is not affiliated with GeneTex and does not endorse this product.



**GTX636247 IHC-P (cell pellet) Image**

Influenza A virus Nucleoprotein antibody [HL1089] detects Influenza A virus Nucleoprotein protein at cytoplasm by immunohistochemical analysis.

Sample: Paraffin-embedded flu\_A\_NP (Kansas/2017/H3N2) transfected 293T cell FFPE Cell Pellet Block. Green: Influenza A virus Nucleoprotein stained by Influenza A virus Nucleoprotein antibody [HL1089] (GTX636318) diluted at 1:1000.

Antigen Retrieval: Citrate buffer, pH 6.0, 15 min



For full product information, images and publications, please visit our [website](http://www.genetex.com).